

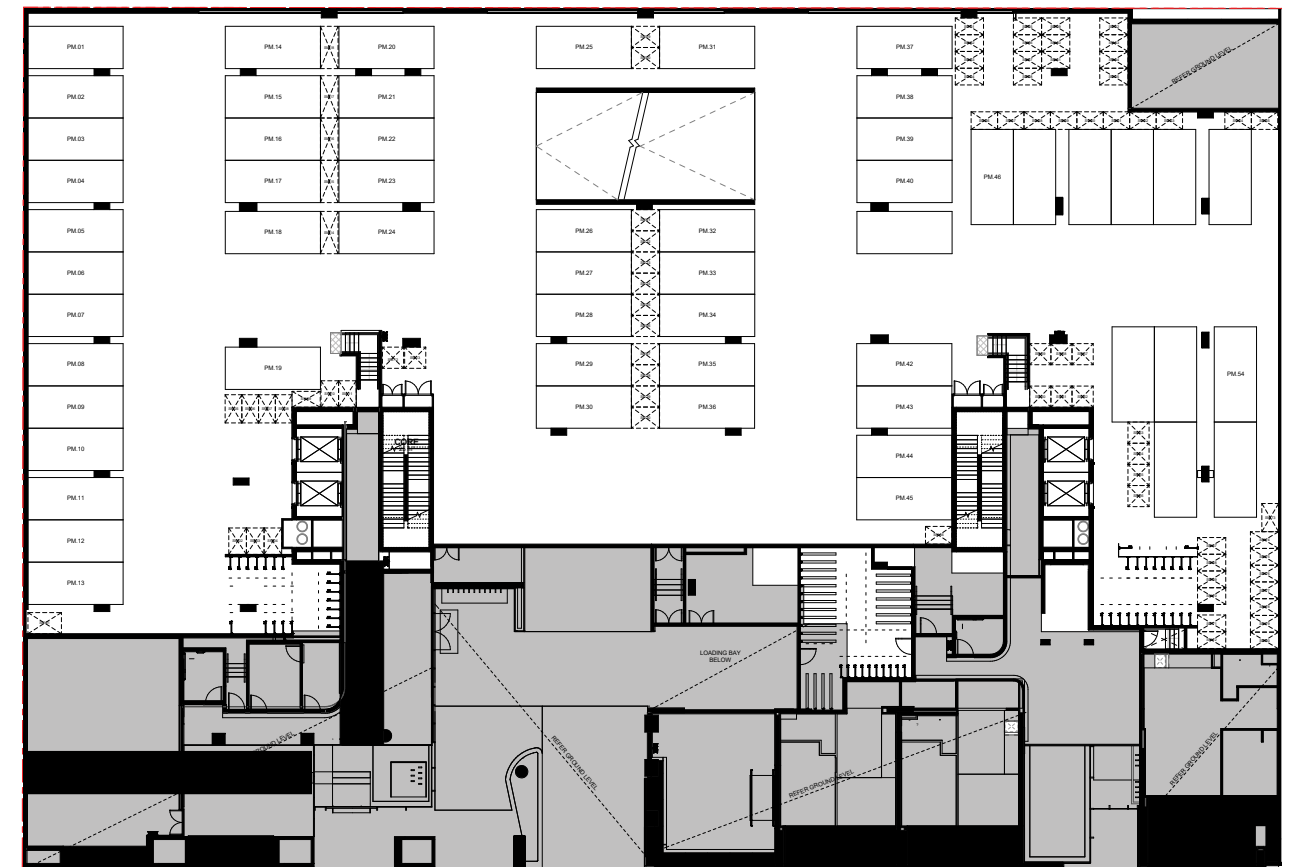
DORCAS ST

EAST & WEST TOWER  
GROUND LEVEL

0 1 2 3 5

N  
/

The information provided is illustrative only and may not be relied upon. In particular, the final area dimensions of any apartment sold will be determined by the contract of sale and may differ from the depicted. Whilst every effort is made to provide accurate and complete information, the developer does not warrant or represent that the information in this floor plan is free from errors or omissions or is suitable for your intended use. Subject by any terms implied by law which cannot be excluded, the developer accepts no responsibility for any loss, damage, cost or expense (whether direct or indirect) by you as a result of any error, omission or misrepresentation in information. All information is subject to change without notice.



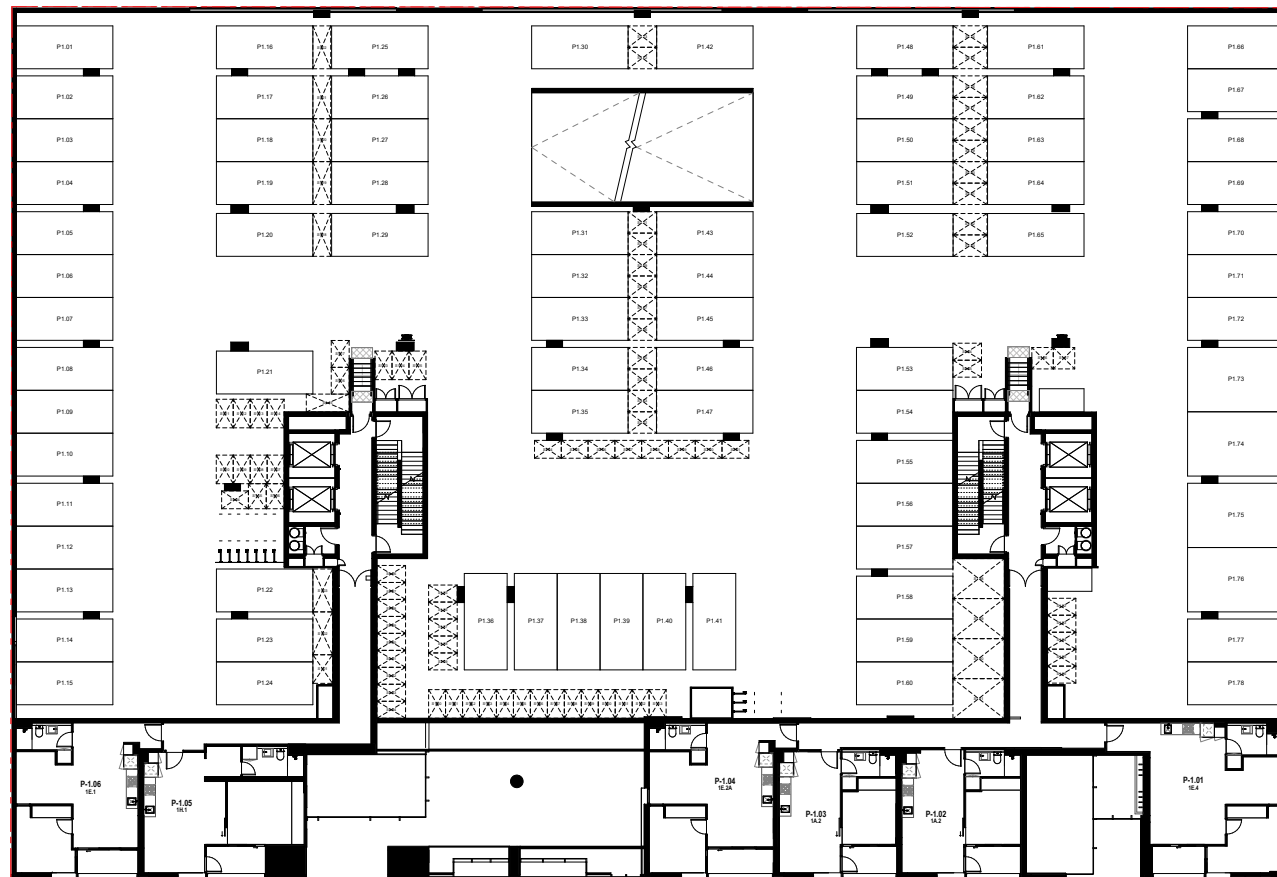
DORCAS ST

EAST & WEST TOWER  
GROUND MEZZANINE LEVEL

0 1 2 3 5

N  
/

The information provided is illustrative only and may not be relied upon. In particular, the final area dimensions of any apartment sold will be determined by the contract of sale and may differ from the depicted. Whilst every effort is made to provide accurate and complete information, the developer does not warrant or represent that the information in this floor plan is free from errors or omissions or is suitable for your intended use. Subject by any terms implied by law which cannot be excluded, the developer accepts no responsibility for any loss, damage, cost or expense (whether direct or indirect) by you as a result of any error, omission or misrepresentation in information. All information is subject to change without notice.

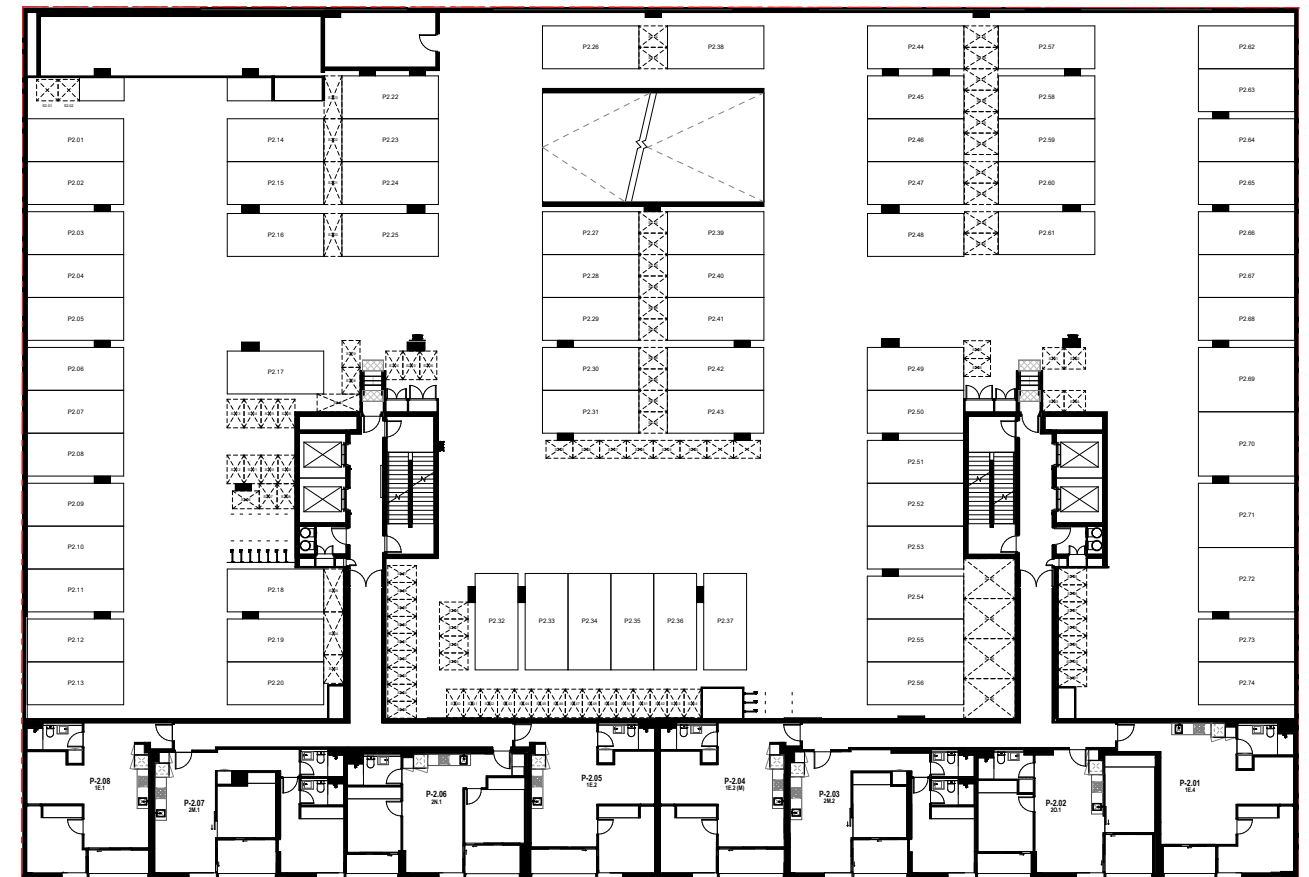


DORCAS ST

EAST & WEST TOWER  
PODIUM LEVEL 1



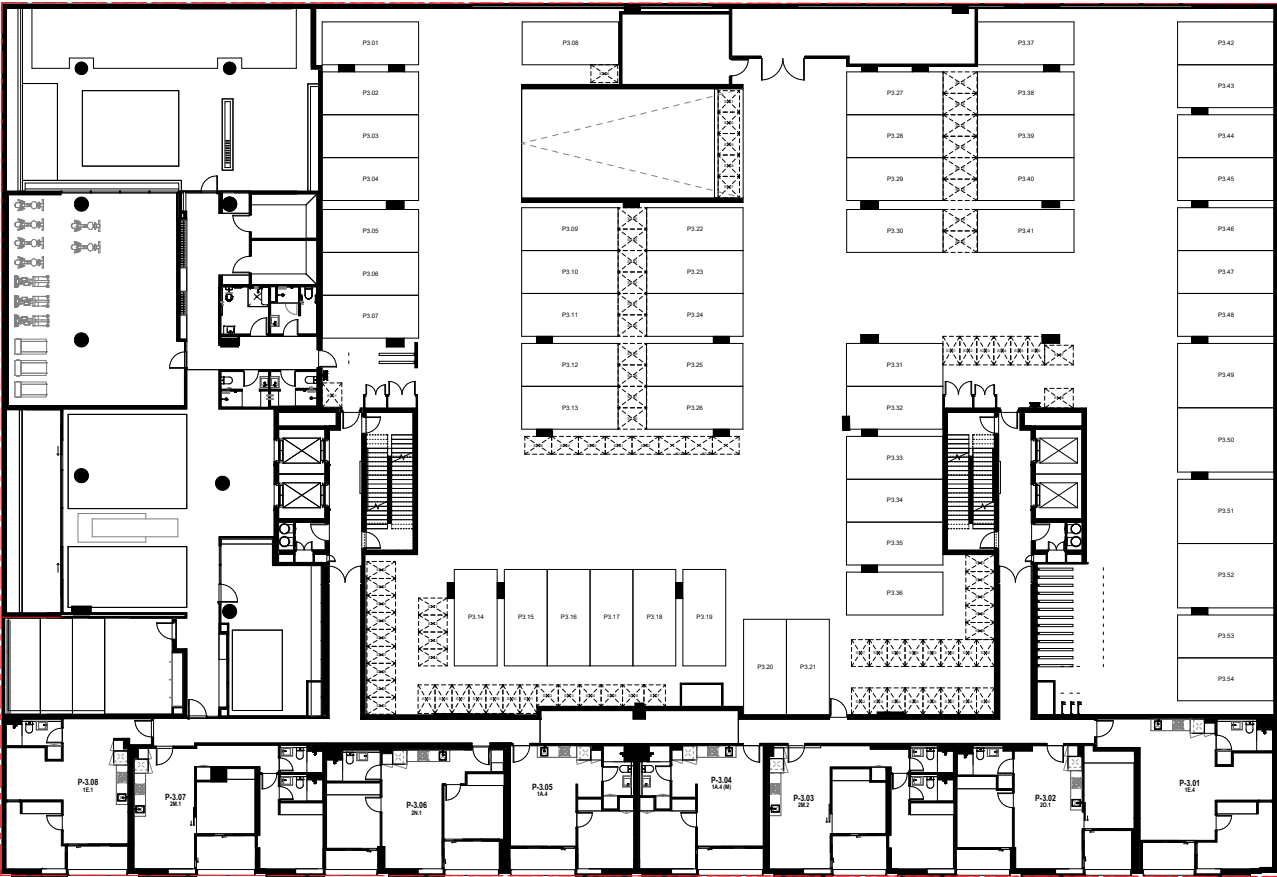
N /



DORCAS ST

EAST & WEST TOWER  
PODIUM LEVEL 2





EAST & WEST TOWER  
PODIUM LEVEL 3



N  
/

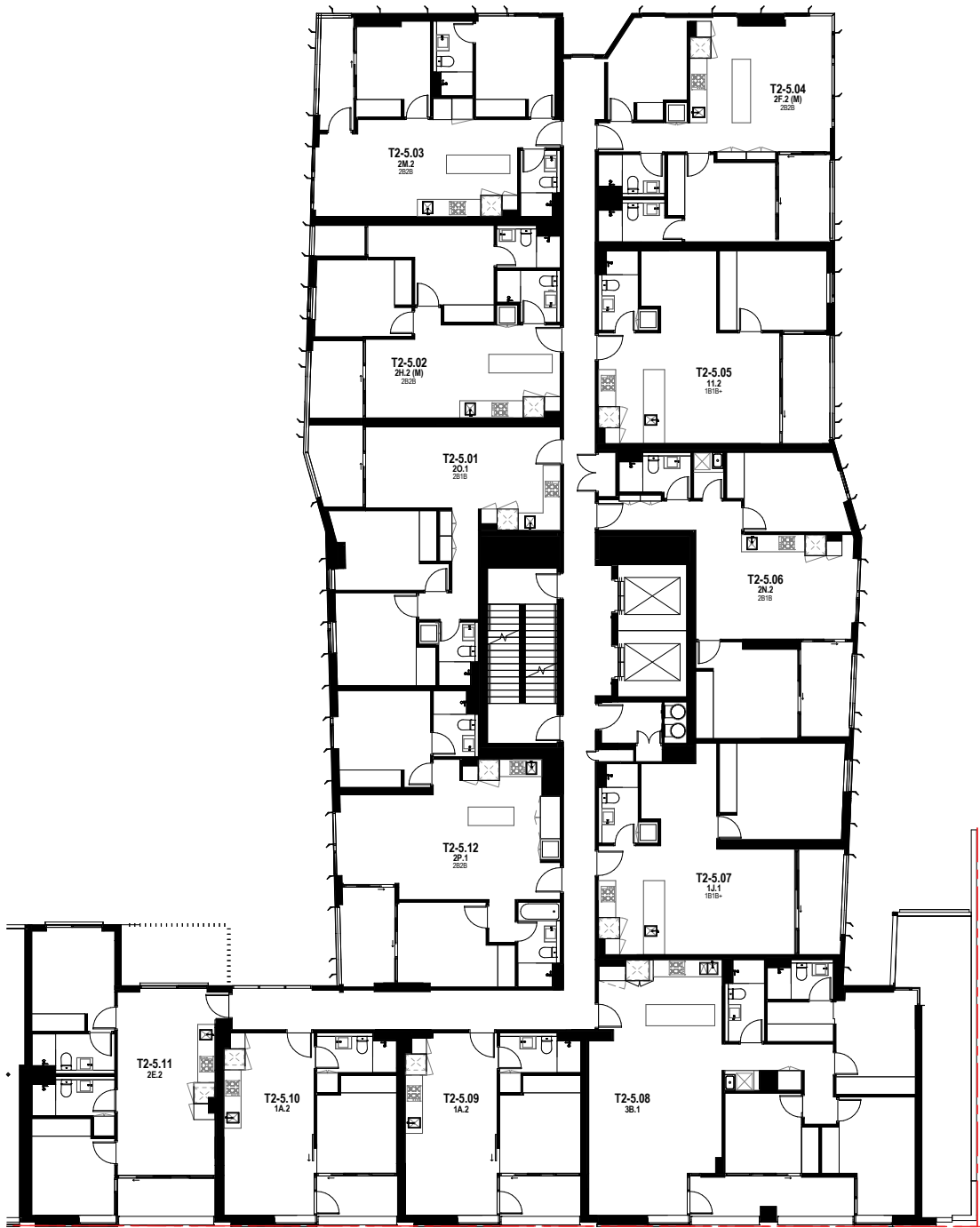
The information provided is illustrative only and may not be relied upon. In particular, the final area dimensions of any apartment sold will be determined by the contract of sale and may differ from the depicted. Whilst every effort is made to provide accurate and complete information, the developer does not warrant or represent that the information in this floor plan is free from errors or omissions or is suitable for your intended use. Subject by any terms implied by law which cannot be excluded, the developer accepts no responsibility for any loss, damage, cost or expense (whether direct or indirect) by you as a result of any error, omission or misrepresentation in information. All information is subject to change without notice.

EAST & WEST TOWER  
LEVEL 4



N  
/

The information provided is illustrative only and may not be relied upon. In particular, the final area dimensions of any apartment sold will be determined by the contract of sale and may differ from the depicted. Whilst every effort is made to provide accurate and complete information, the developer does not warrant or represent that the information in this floor plan is free from errors or omissions or is suitable for your intended use. Subject by any terms implied by law which cannot be excluded, the developer accepts no responsibility for any loss, damage, cost or expense (whether direct or indirect) by you as a result of any error, omission or misrepresentation in information. All information is subject to change without notice.



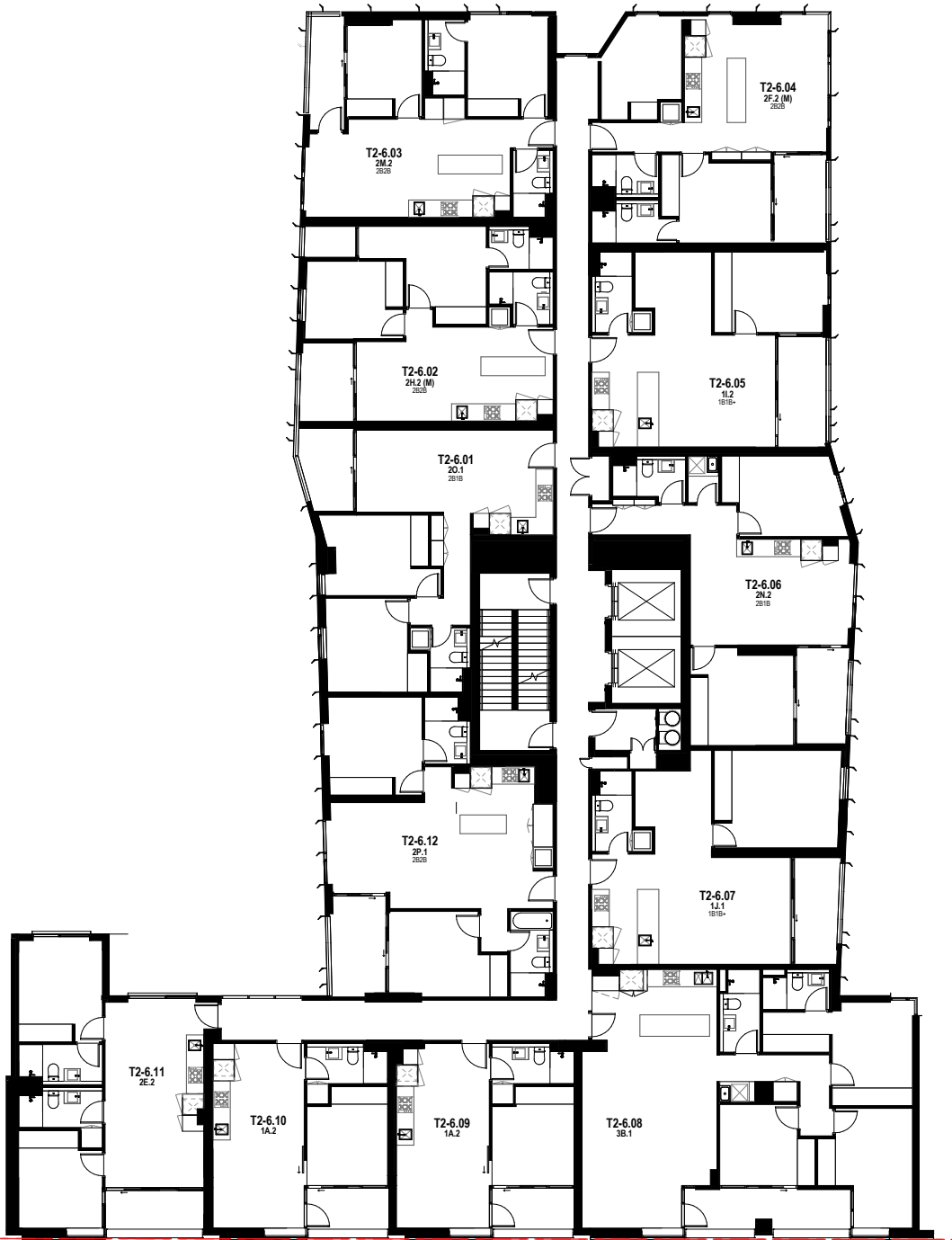
DORCAS ST

EAST TOWER  
LEVEL 5



N  
/

The information provided is illustrative only and may not be relied upon. In particular, the final area dimensions of any apartment sold will be determined by the contract of sale and may differ from the depicted. Whilst every effort is made to provide accurate and complete information, the developer does not warrant or represent that the information in this floor plan is free from errors or omissions or is suitable for your intended use. Subject by any terms implied by law which cannot be excluded, the developer accepts no responsibility for any loss, damage, cost or expense (whether direct or indirect) by you as a result of any error, omission or misrepresentation in information. All information is subject to change without notice.



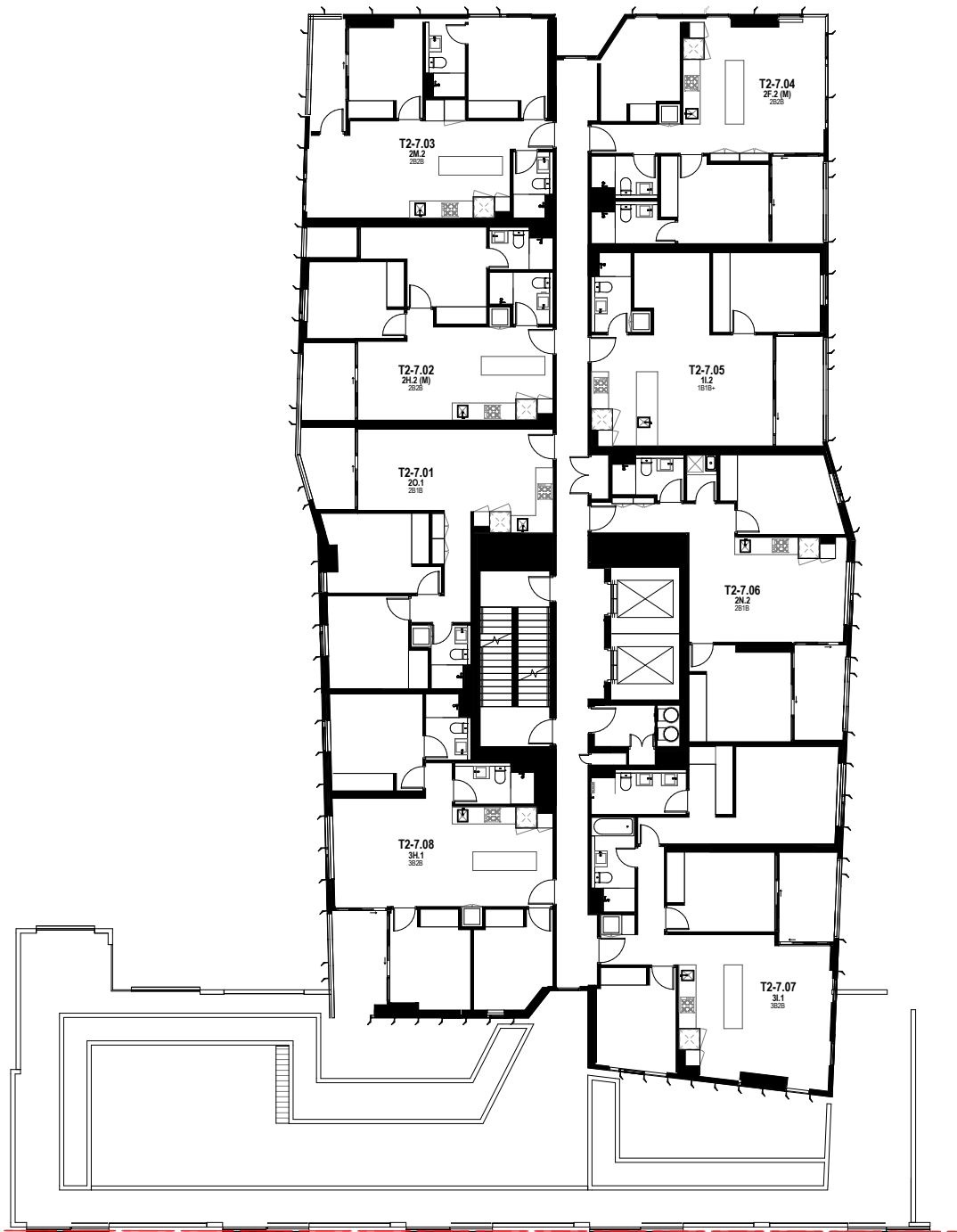
DORCAS ST

EAST TOWER  
LEVEL 6



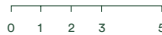
N  
/

The information provided is illustrative only and may not be relied upon. In particular, the final area dimensions of any apartment sold will be determined by the contract of sale and may differ from the depicted. Whilst every effort is made to provide accurate and complete information, the developer does not warrant or represent that the information in this floor plan is free from errors or omissions or is suitable for your intended use. Subject by any terms implied by law which cannot be excluded, the developer accepts no responsibility for any loss, damage, cost or expense (whether direct or indirect) by you as a result of any error, omission or misrepresentation in information. All information is subject to change without notice.



DORCAS ST

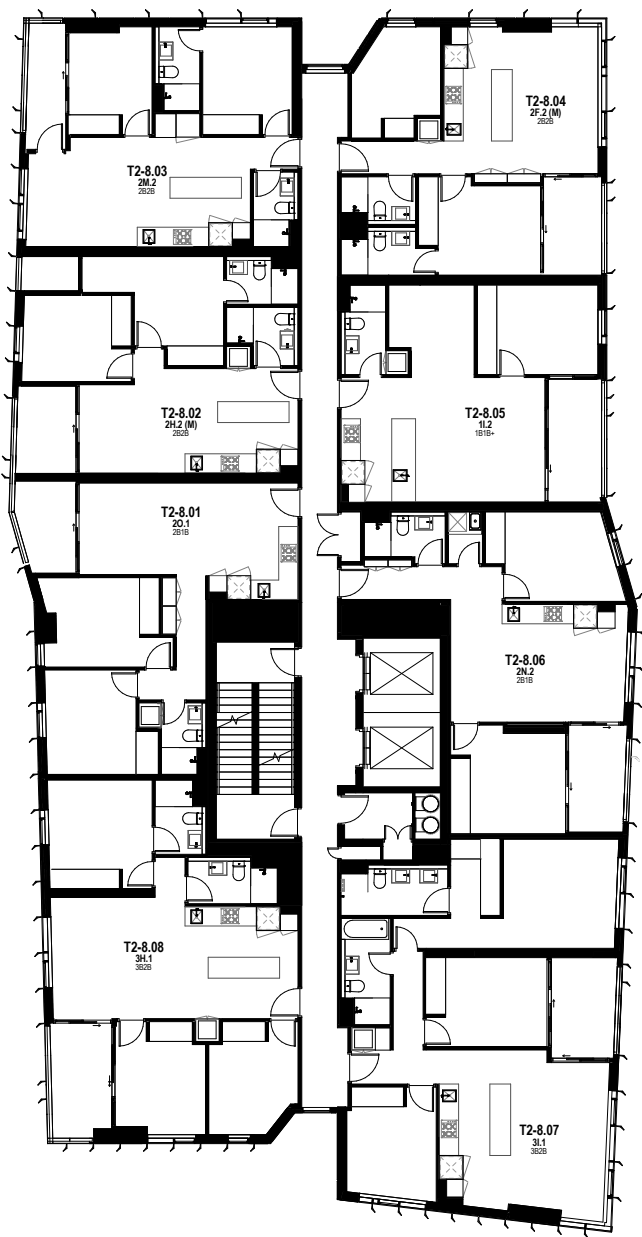
EAST TOWER  
LEVEL 7



N  
/

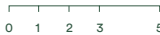
The information provided is illustrative only and may not be relied upon. In particular, the final area dimensions of any apartment sold will be determined by the contract of sale and may differ from the depicted. Whilst every effort is made to provide accurate and complete information, the developer does not warrant or represent that the information in this floor plan is free from errors or omissions or is suitable for your intended use. Subject by any terms implied by law which cannot be excluded, the developer accepts no responsibility for any loss, damage, cost or expense (whether direct or indirect) by you as a result of any error, omission or misrepresentation in information. All information is subject to change without notice.

TheEvermore.com.au



DORCAS ST

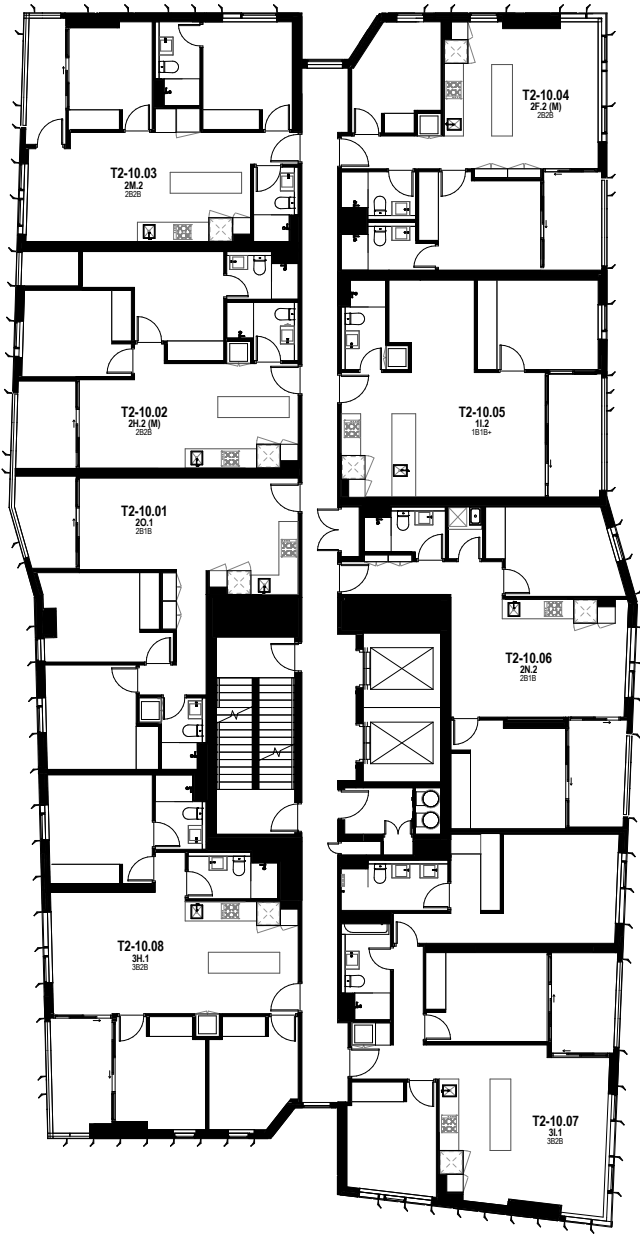
EAST TOWER  
LEVEL 8 – 9



N  
/

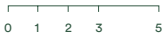
The information provided is illustrative only and may not be relied upon. In particular, the final area dimensions of any apartment sold will be determined by the contract of sale and may differ from the depicted. Whilst every effort is made to provide accurate and complete information, the developer does not warrant or represent that the information in this floor plan is free from errors or omissions or is suitable for your intended use. Subject by any terms implied by law which cannot be excluded, the developer accepts no responsibility for any loss, damage, cost or expense (whether direct or indirect) by you as a result of any error, omission or misrepresentation in information. All information is subject to change without notice.

TheEvermore.com.au

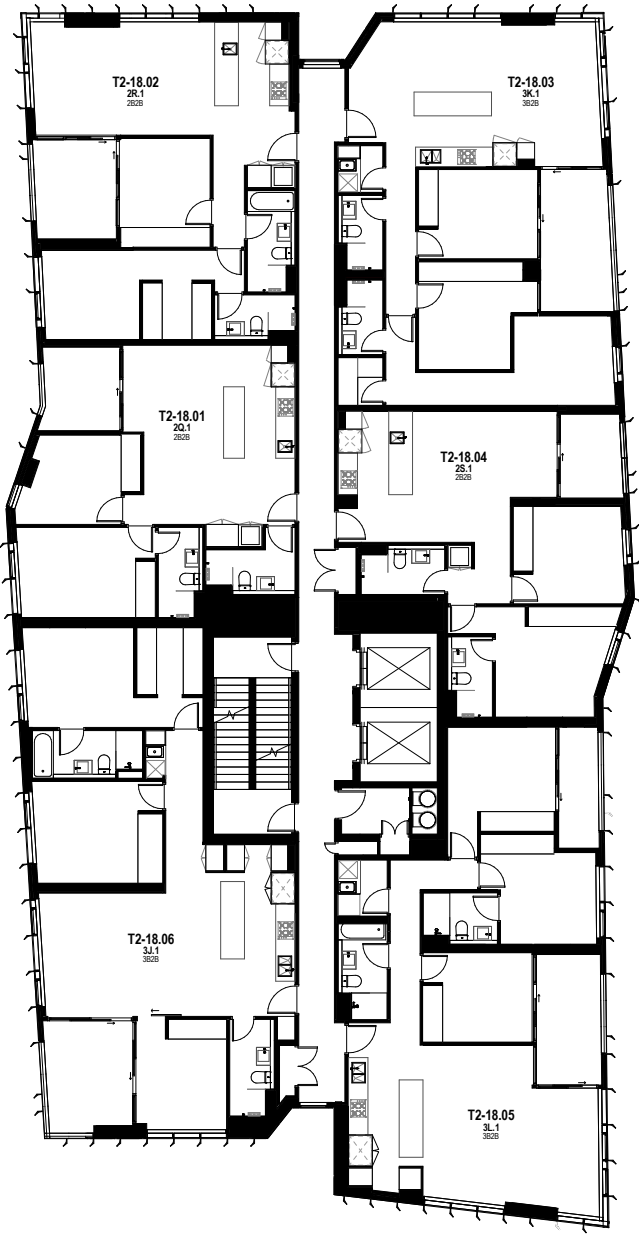


DORCAS ST

EAST TOWER  
LEVEL 10 – 17

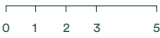


N  
/

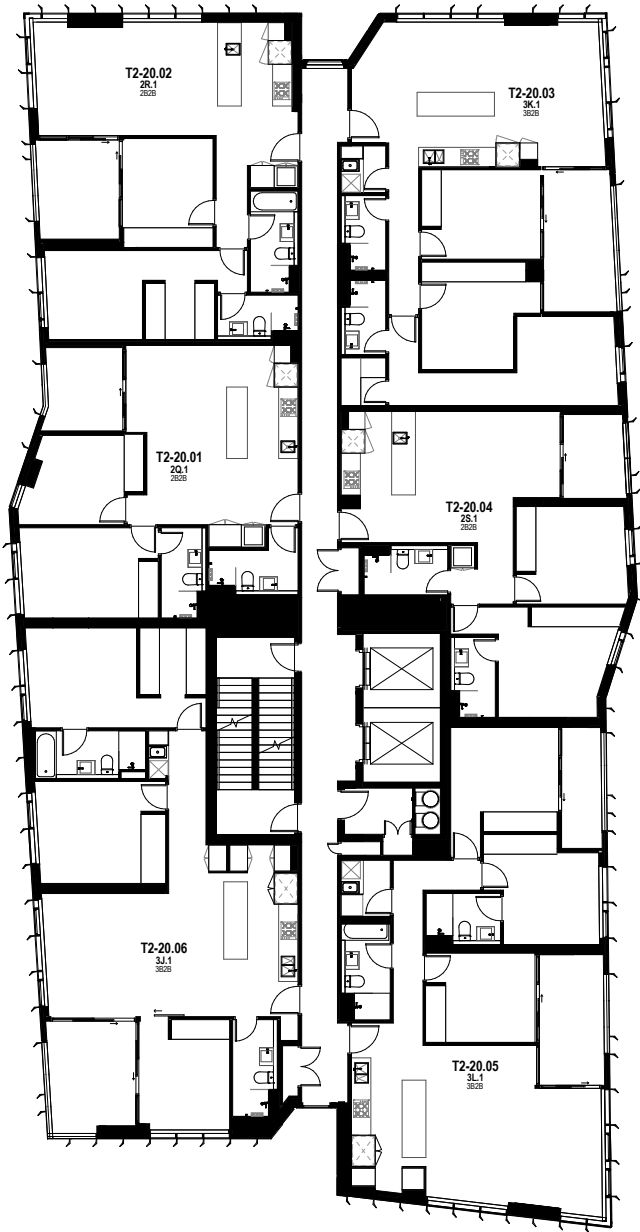


DORCAS ST

EAST TOWER  
LEVEL 18 – 19



N  
/

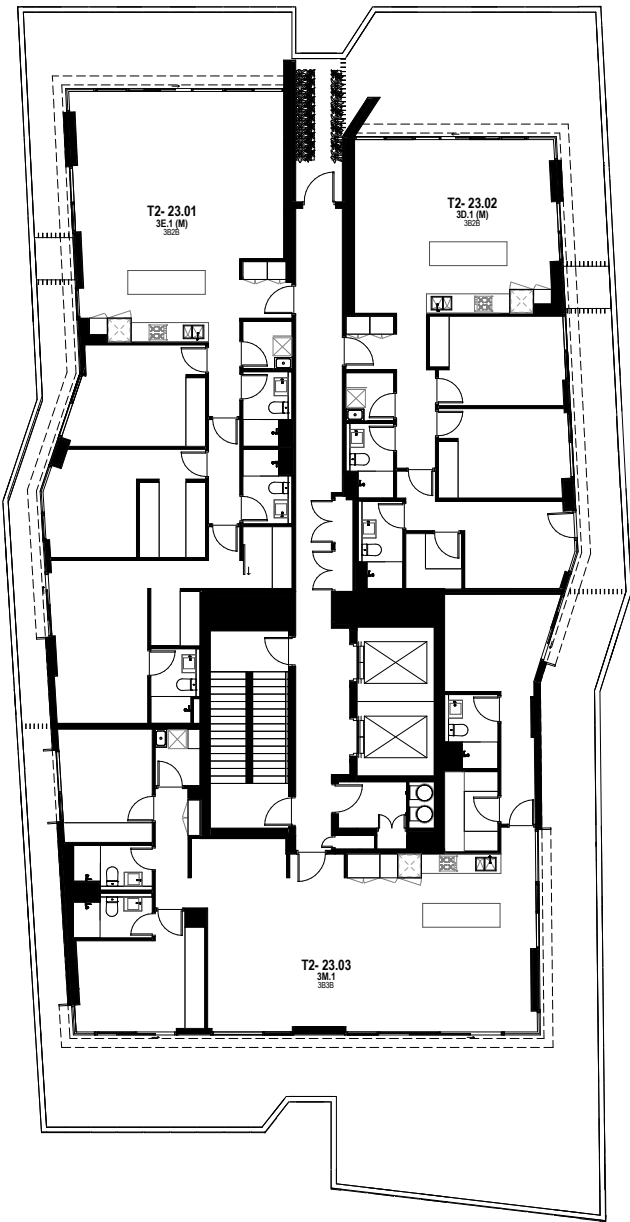


DORCAS ST

EAST TOWER  
LEVEL 20 – 22



N  
/



DORCAS ST

EAST TOWER  
LEVEL 23



N  
/