

BROOKLYN

Townhomes



UNIT F

End Unit • 1612 Sq.Ft.

#21, 1710 - 28 Ave SW



* Floorplan is an artist rendering only and may be subject to change without notice. Builder reserves the right to make modifications and changes to building design, specifications, features and floorplans without notice. Measurements and areas shown are based on pre-construction estimates and are approximate only. E.&O.E. Windows locations and sizes on these renderings are dependant on building location and elevation as approved by the City of Calgary, confirm with your sales representative exact locations. BROOK-25116 Floorplan Insert Sheets v7, July 5, 2021.

BROOKLYN

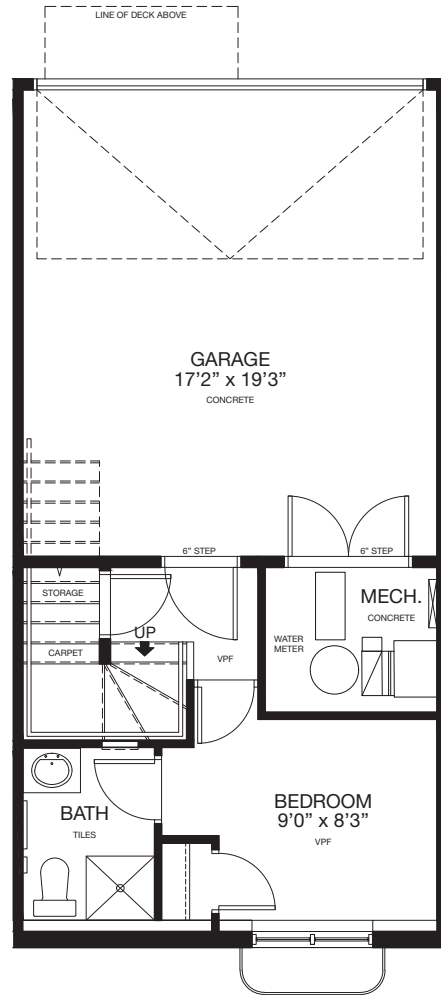
Townhomes



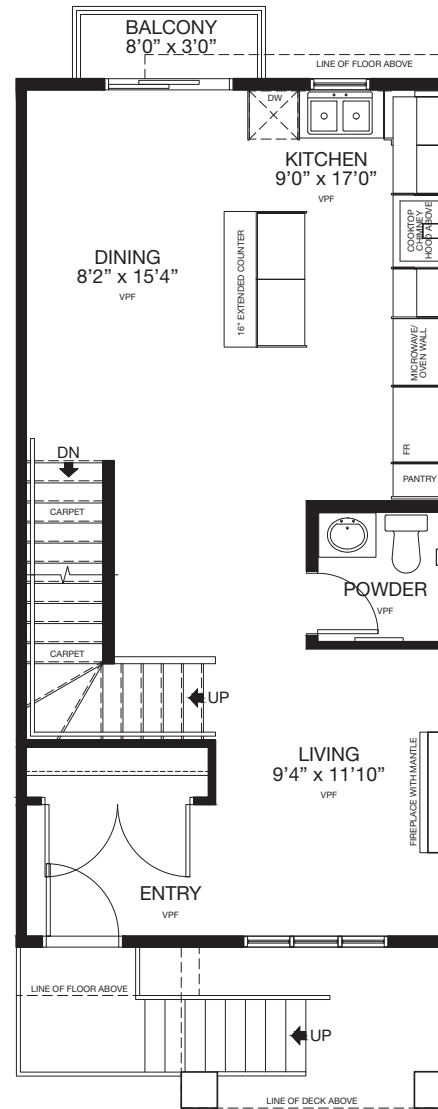
UNIT 2

Int. Unit • 1602 Sq.Ft.

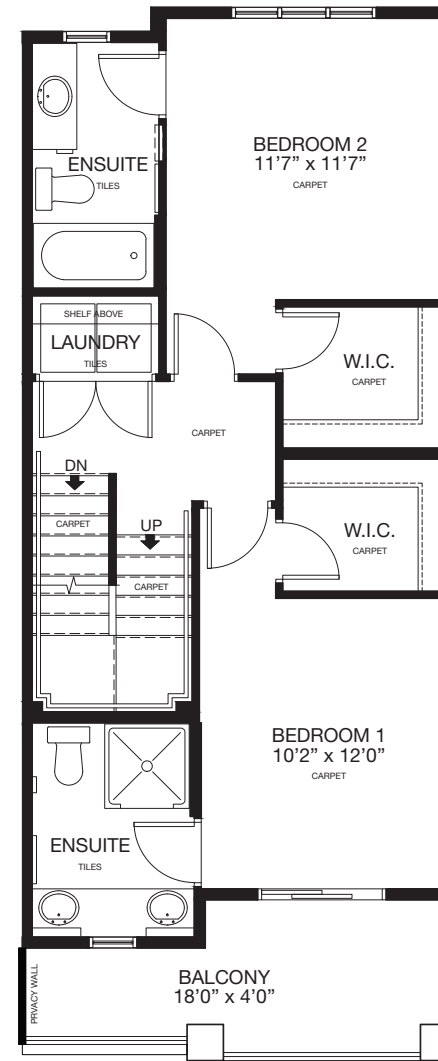
#22, 1710 - 28 Ave SW



ENTRY LEVEL
Area: 243 Sq.Ft.



MAIN FLOOR
Area: 648 Sq.Ft.



UPPER FLOOR
Area: 676 Sq.Ft.



ROOFTOP PATIO
Area: 35 Sq.Ft.
Total Amenity Area: 569 Sq.Ft.

* Floorplan is an artist rendering only and may be subject to change without notice. Builder reserves the right to make modifications and changes to building design, specifications, features and floorplans without notice. Measurements and areas shown are based on pre-construction estimates and are approximate only. E.&O.E. Windows locations and sizes on these renderings are dependant on building location and elevation as approved by the City of Calgary, confirm with your sales representative exact locations. BROOK-25116 Floorplan Insert Sheets v7, July 5, 2021.

BROOKLYN

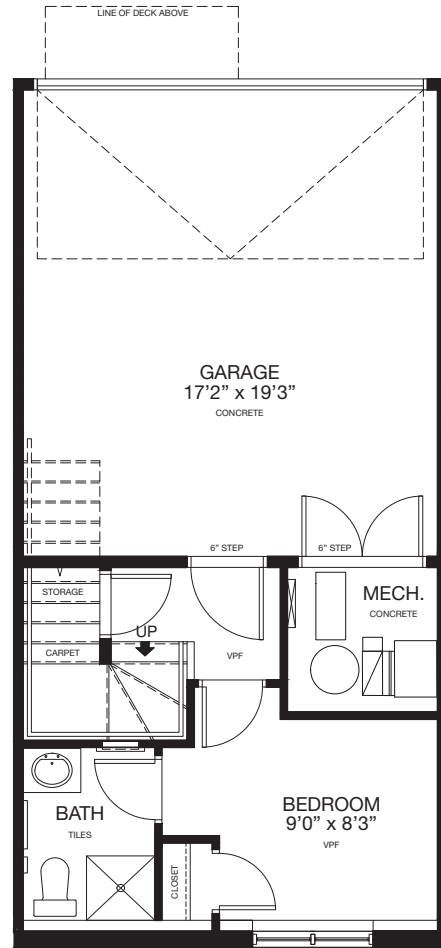
Townhomes



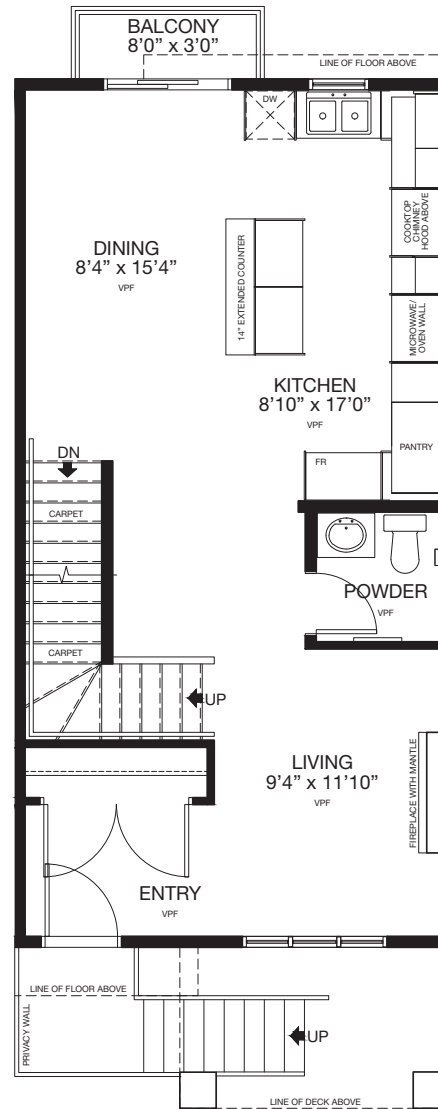
UNIT E

Int. Unit • 1608 Sq.Ft.

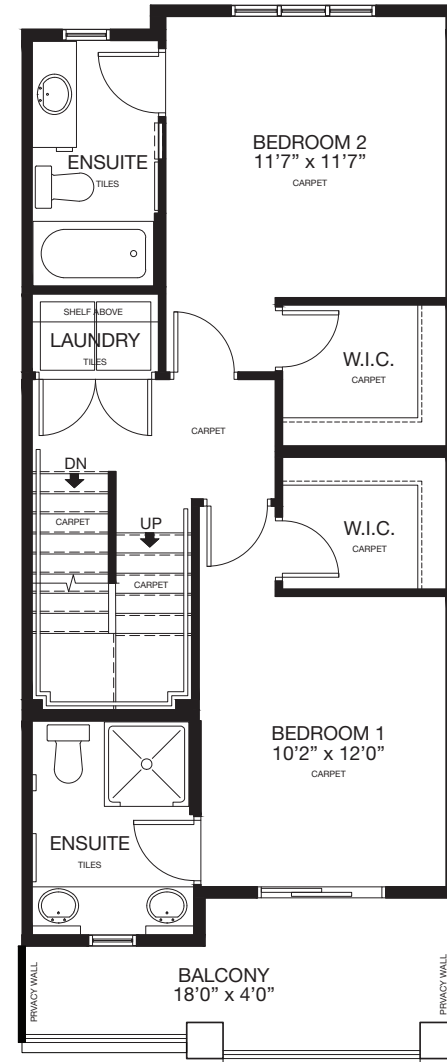
#23, 1710 - 28 Ave SW



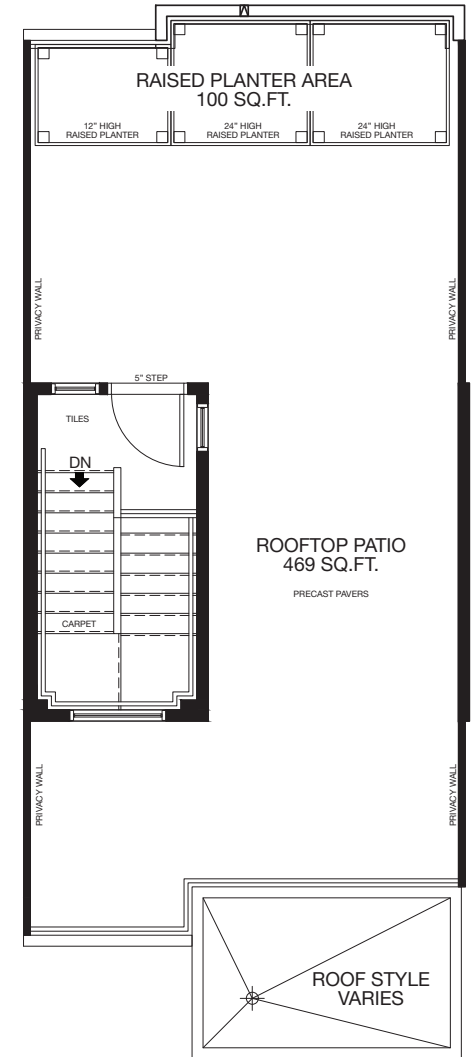
ENTRY LEVEL
Area: 249 Sq.Ft.



MAIN FLOOR
Area: 648 Sq.Ft.



UPPER FLOOR
Area: 676 Sq.Ft.



ROOFTOP PATIO
Area: 35 Sq.Ft.
Total Amenity Area: 569 Sq.Ft.

* Floorplan is an artist rendering only and may be subject to change without notice. Builder reserves the right to make modifications and changes to building design, specifications, features and floorplans without notice. Measurements and areas shown are based on pre-construction estimates and are approximate only. E.&O.E. Windows locations and sizes on these renderings are dependant on building location and elevation as approved by the City of Calgary, confirm with your sales representative exact locations. BROOK-25116 Floorplan Insert Sheets v7, July 5, 2021.

BROOKLYN

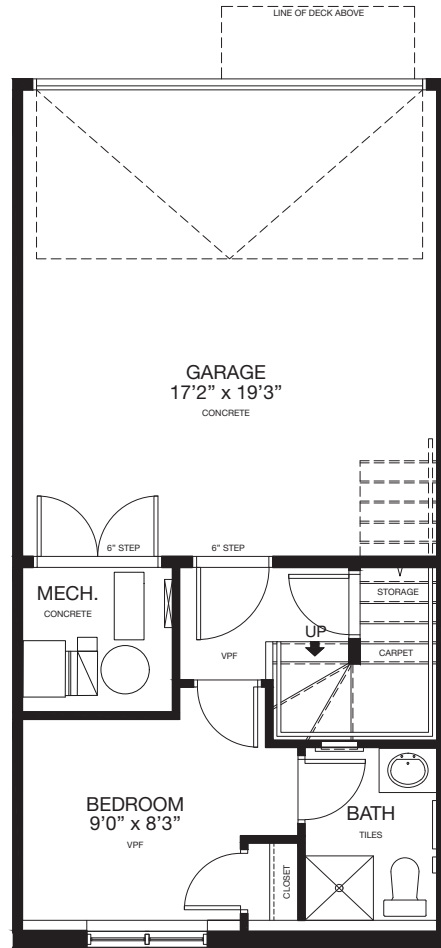
Townhomes



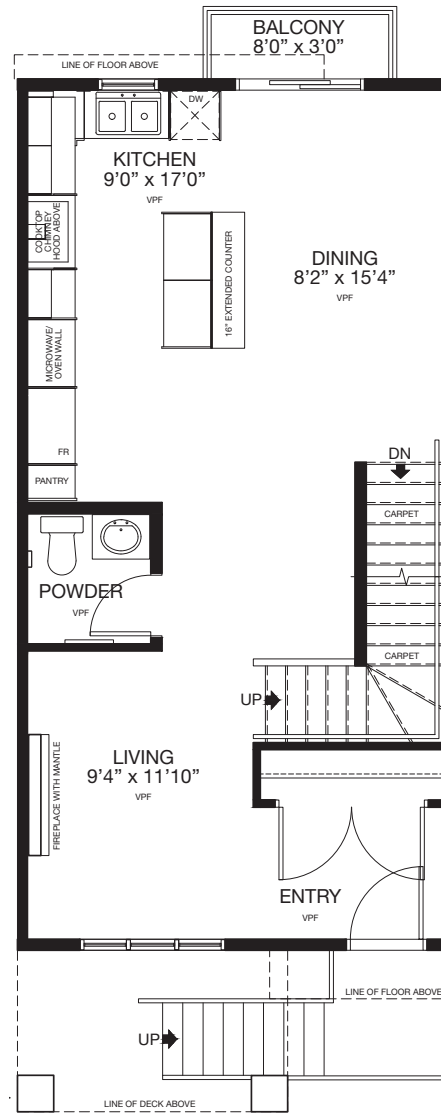
UNIT E

Int. Unit • 1608 Sq.Ft.

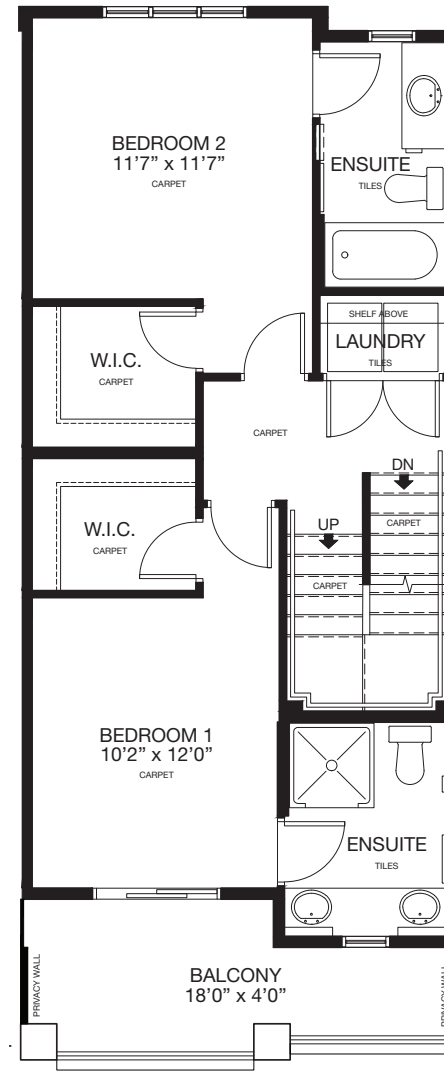
#24, 1710 - 28 Ave SW



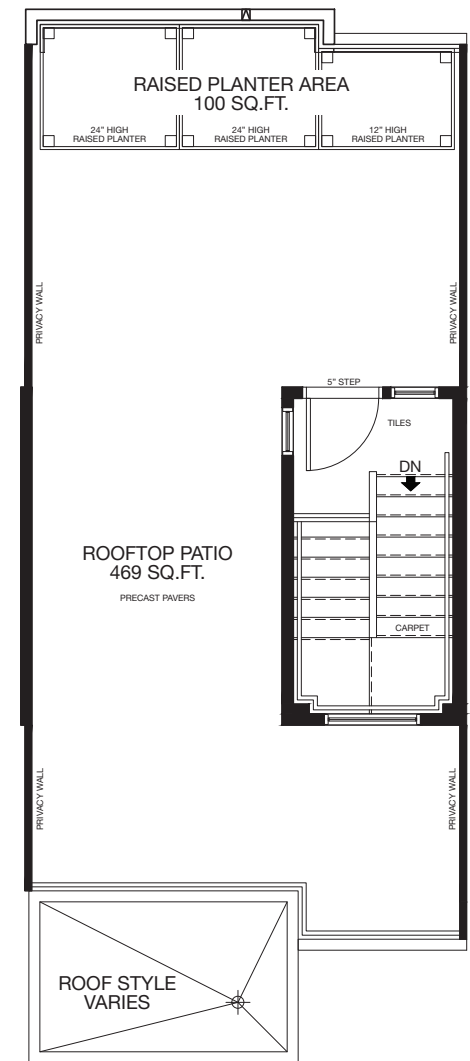
ENTRY LEVEL
Area: 249 Sq.Ft.



MAIN FLOOR
Area: 648 Sq.Ft.



UPPER FLOOR
Area: 676 Sq.Ft.



ROOFTOP PATIO
Area: 35 Sq.Ft.
Total Amenity Area: 569 Sq.Ft.

* Floorplan is an artist rendering only and may be subject to change without notice. Builder reserves the right to make modifications and changes to building design, specifications, features and floorplans without notice. Measurements and areas shown are based on pre-construction estimates and are approximate only. E.&O.E. Windows locations and sizes on these renderings are dependant on building location and elevation as approved by the City of Calgary, confirm with your sales representative exact locations. BROOK-25116 Floorplan Insert Sheets v7, July 5, 2021.

BROOKLYN

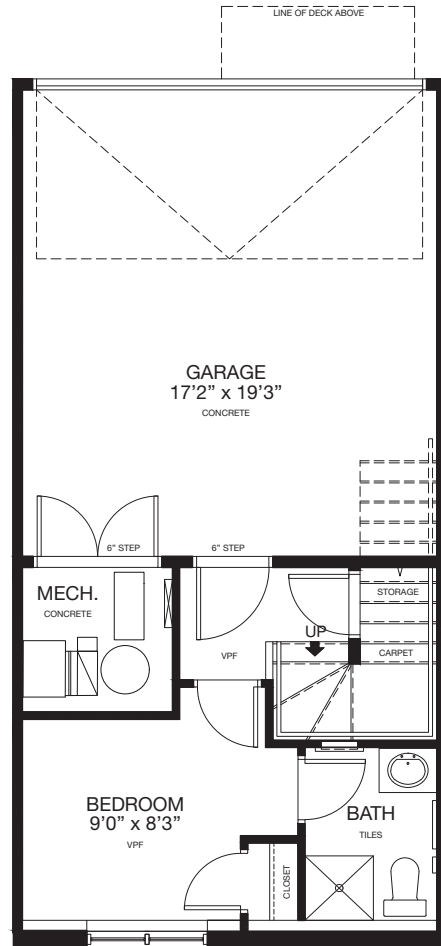
Townhomes



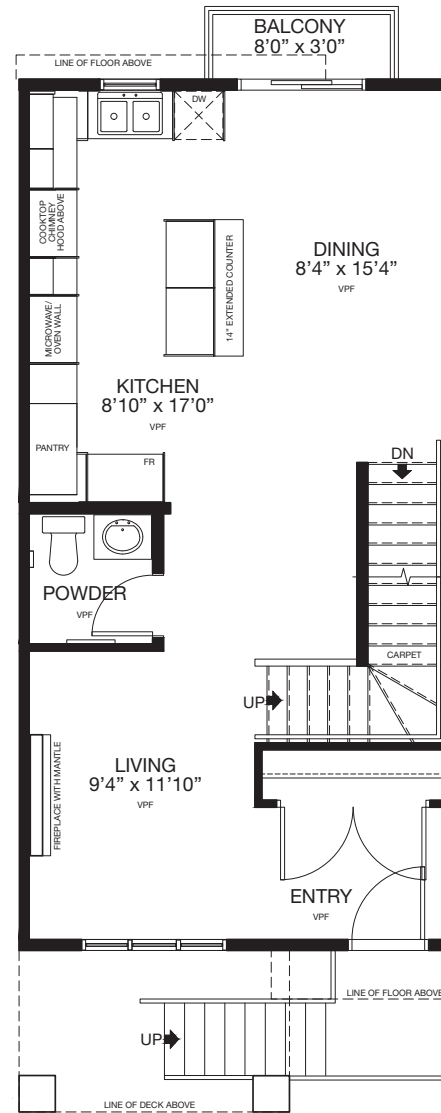
UNITE

Int. Unit • 1608 Sq.Ft.

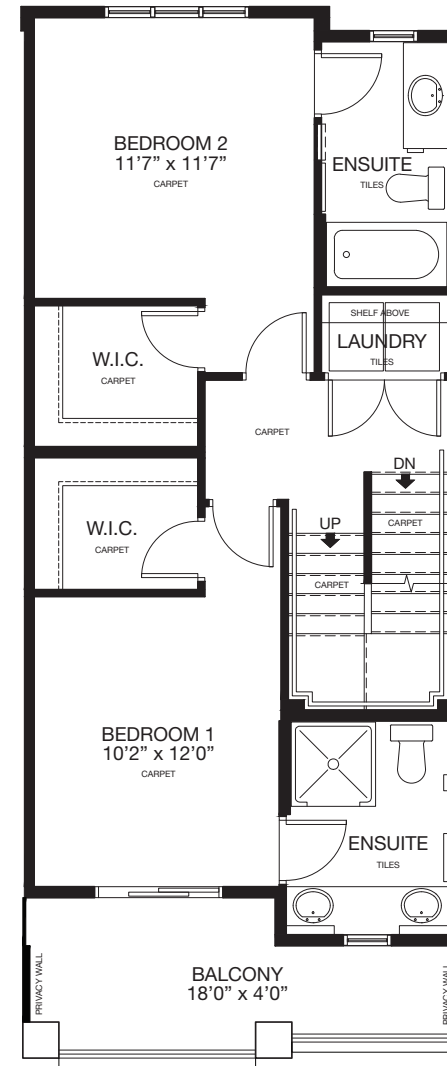
#25, 1710 - 28 Ave SW



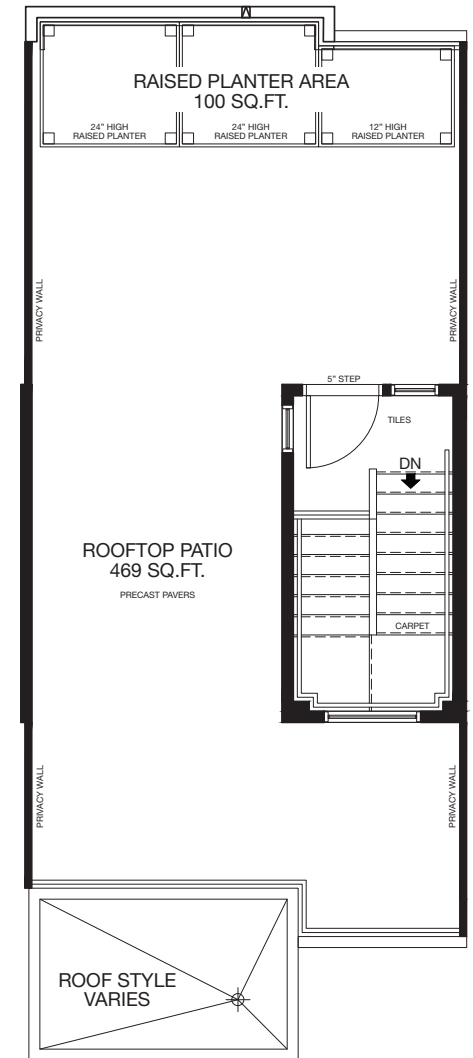
ENTRY LEVEL
Area: 249 Sq.Ft.



MAIN FLOOR
Area: 648 Sq.Ft.



UPPER FLOOR
Area: 676 Sq.Ft.



ROOFTOP PATIO
Area: 35 Sq.Ft.
Total Amenity Are: 569 Sq.Ft.

* Floorplan is an artist rendering only and may be subject to change without notice. Builder reserves the right to make modifications and changes to building design, specifications, features and floorplans without notice. Measurements and areas shown are based on pre-construction estimates and are approximate only. E.&O.E. Windows locations and sizes on these renderings are dependant on building location and elevation as approved by the City of Calgary, confirm with your sales representative exact locations. BROOK-25116 Floorplan Insert Sheets v7, July 5, 2021.

BROOKLYN

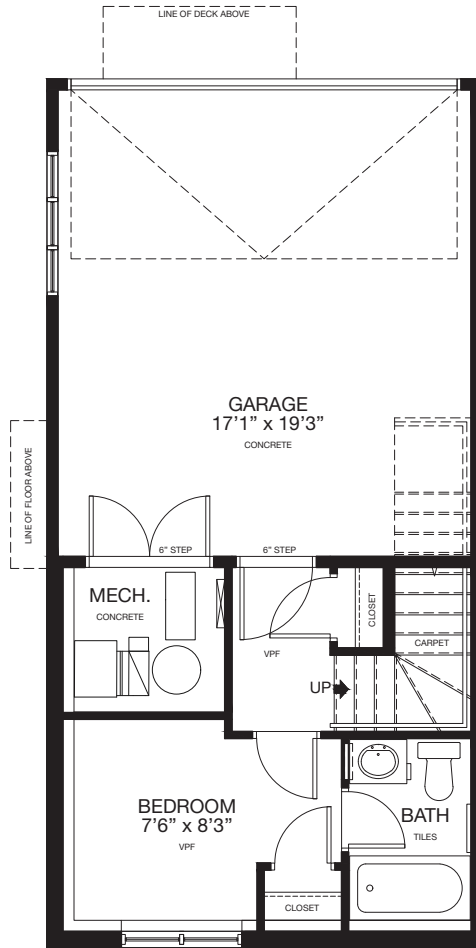
Townhomes



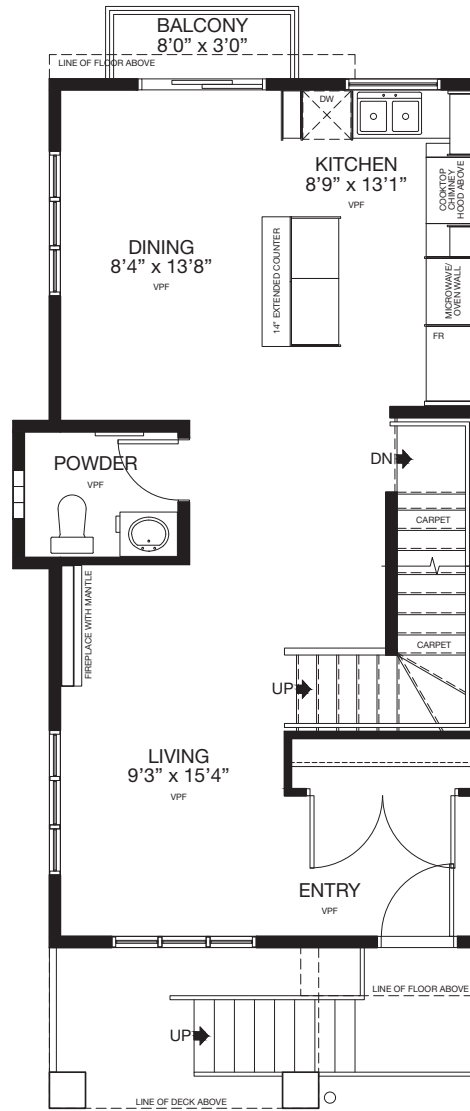
UNIT D

Int. Unit • 1612 Sq.Ft.

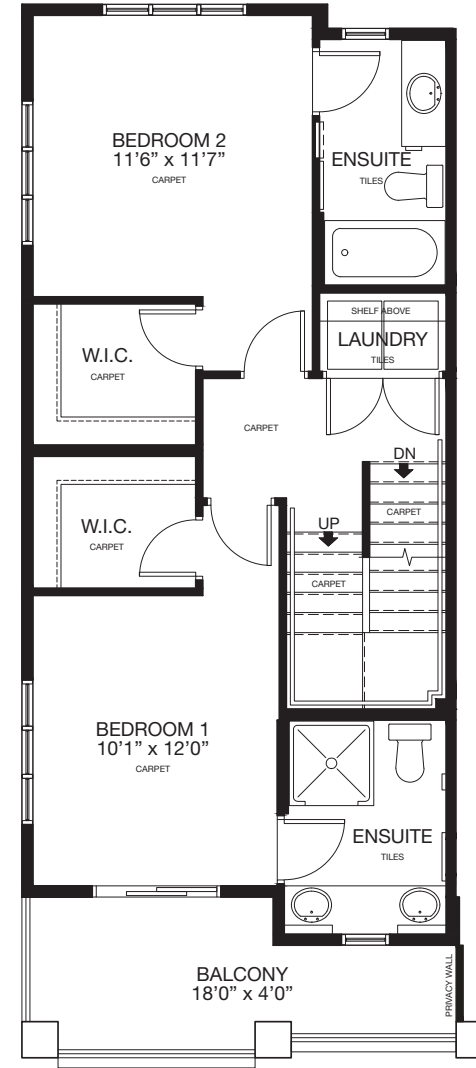
#26, 1710 - 28 Ave SW



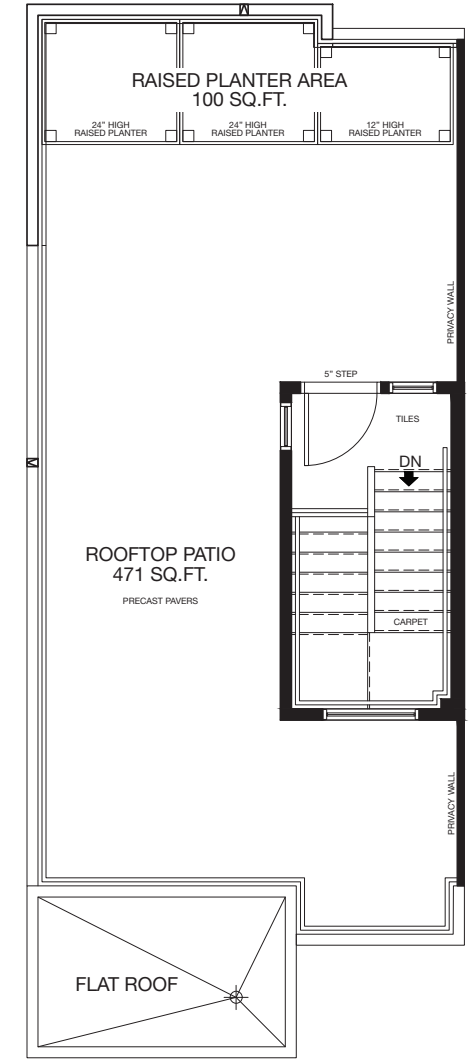
ENTRY LEVEL
Area: 244 Sq.Ft.



MAIN FLOOR
Area: 657 Sq.Ft.



UPPER FLOOR
Area: 676 Sq.Ft.



ROOFTOP PATIO
Area: 35 Sq.Ft.
Total Amenity Area: 571 Sq.Ft.

* Floorplan is an artist rendering only and may be subject to change without notice. Builder reserves the right to make modifications and changes to building design, specifications, features and floorplans without notice. Measurements and areas shown are based on pre-construction estimates and are approximate only. E.&O.E. Windows locations and sizes on these renderings are dependant on building location and elevation as approved by the City of Calgary, confirm with your sales representative exact locations. BROOK-25116 Floorplan Insert Sheets v7, July 5, 2021.

BROOKLYN

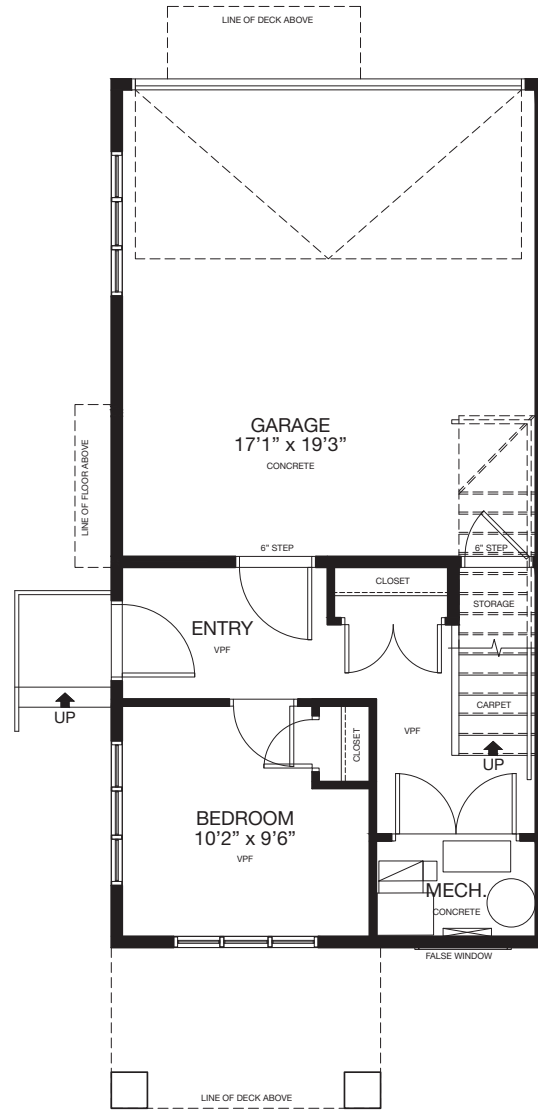
Townhomes



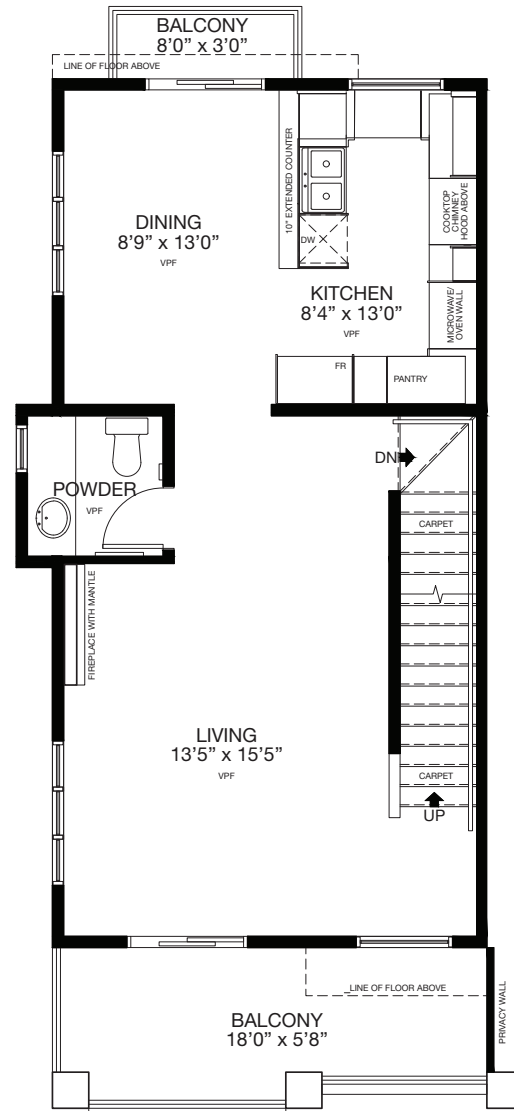
UNIT A

End Unit • 1632 Sq.Ft.

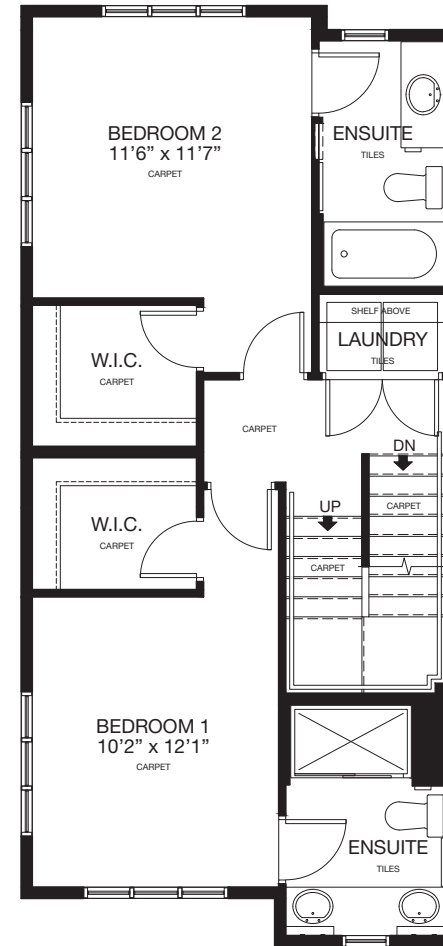
#11, 1710 - 28 Ave SW



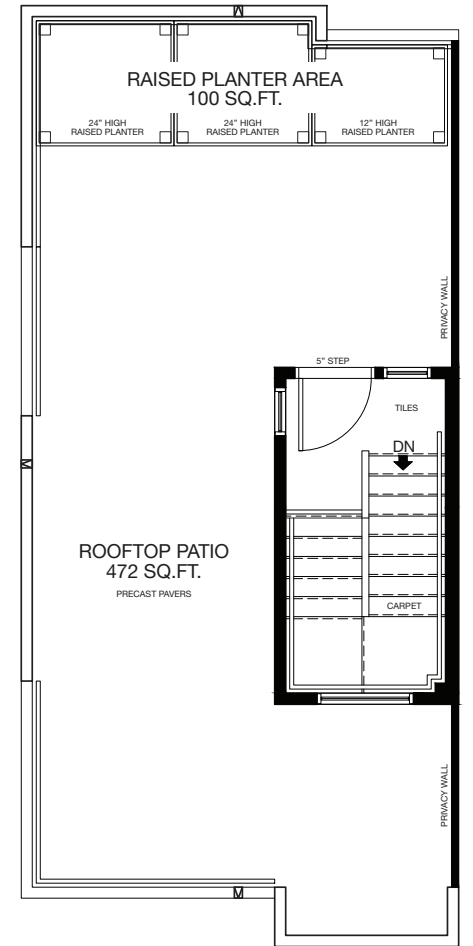
ENTRY LEVEL
Area: 261 Sq.Ft.



MAIN FLOOR
Area: 658 Sq.Ft.



UPPER FLOOR
Area: 676 Sq.Ft.



ROOFTOP PATIO
Area: 37 Sq.Ft.
Total Amenity Area: 572 Sq.Ft.

* Floorplan is an artist rendering only and may be subject to change without notice. Builder reserves the right to make modifications and changes to building design, specifications, features and floorplans without notice. Measurements and areas shown are based on pre-construction estimates and are approximate only. E.&O.E. Windows locations and sizes on these renderings are dependant on building location and elevation as approved by the City of Calgary, confirm with your sales representative exact locations. BROOK-25116 Floorplan Insert Sheets v7, July 5, 2021.

BROOKLYN

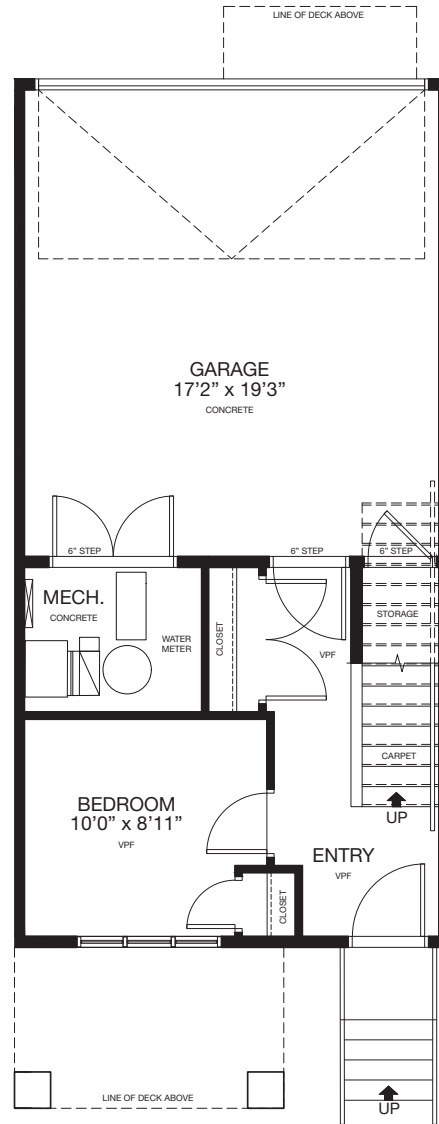
Townhomes



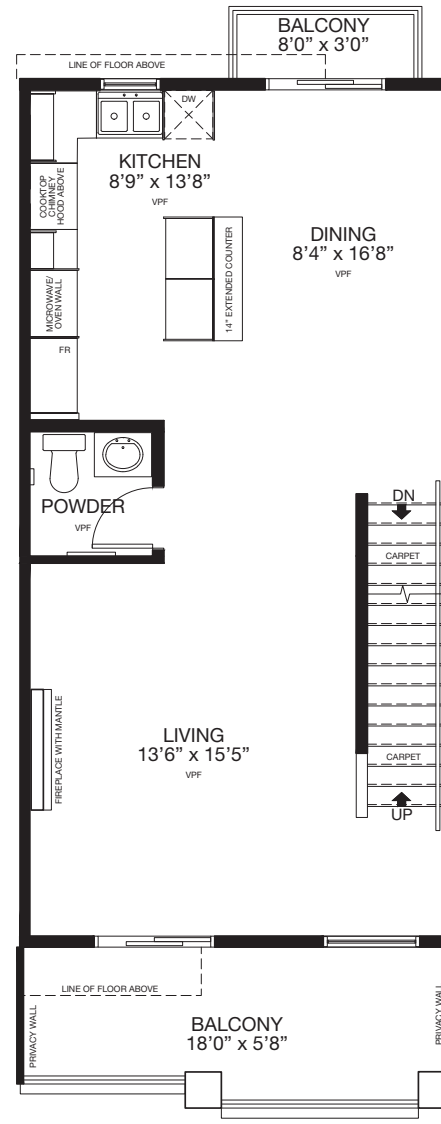
UNIT B2

Int. Unit • 1603 Sq.Ft.

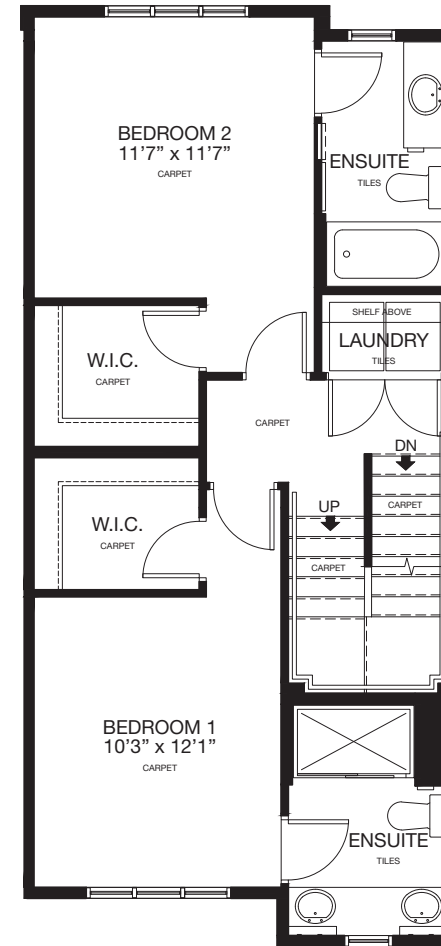
#12, 1710 - 28 Ave SW



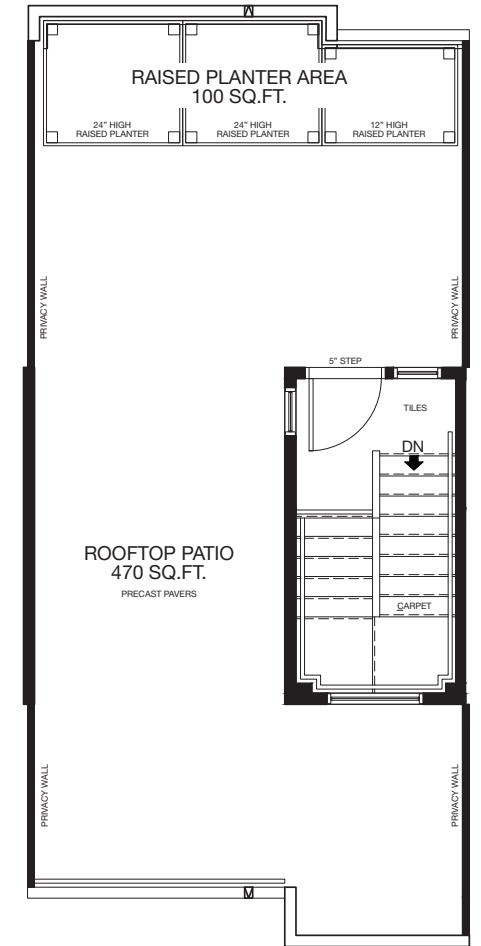
ENTRY LEVEL
Area: 242 Sq.Ft.



MAIN FLOOR
Area: 648 Sq.Ft.



UPPER FLOOR
Area: 676 Sq.Ft.



ROOFTOP PATIO
Area: 37 Sq.Ft.
Total Amenity Area: 570 Sq.Ft.

* Floorplan is an artist rendering only and may be subject to change without notice. Builder reserves the right to make modifications and changes to building design, specifications, features and floorplans without notice. Measurements and areas shown are based on pre-construction estimates and are approximate only. E.&O.E. Windows locations and sizes on these renderings are dependant on building location and elevation as approved by the City of Calgary, confirm with your sales representative exact locations. BROOK-25116 Floorplan Insert Sheets v7, July 5, 2021.

BROOKLYN

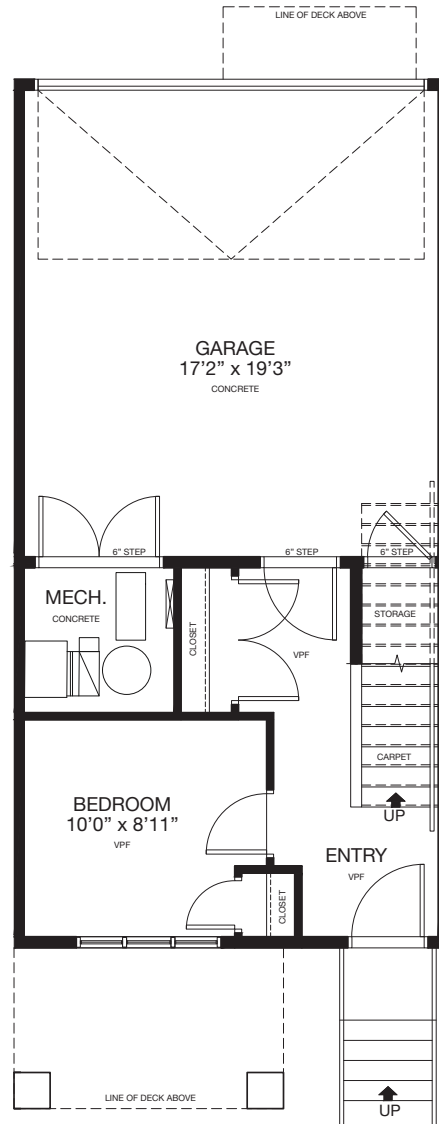
Townhomes



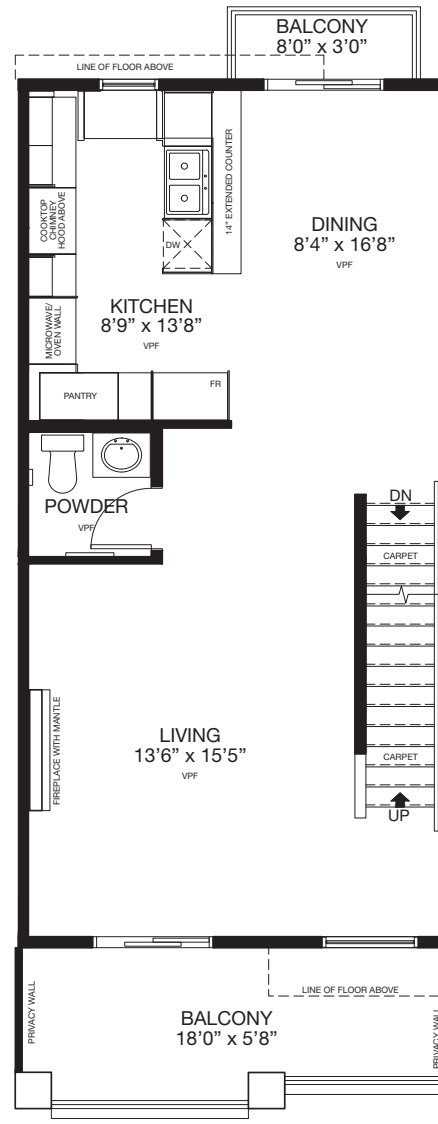
UNIT B

Int. Unit • 1610 Sq.Ft.

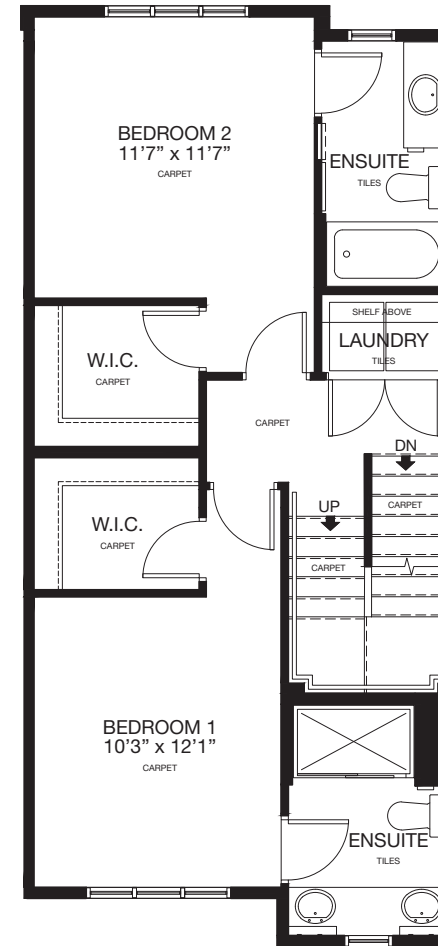
#13, 1710 - 28 Ave SW



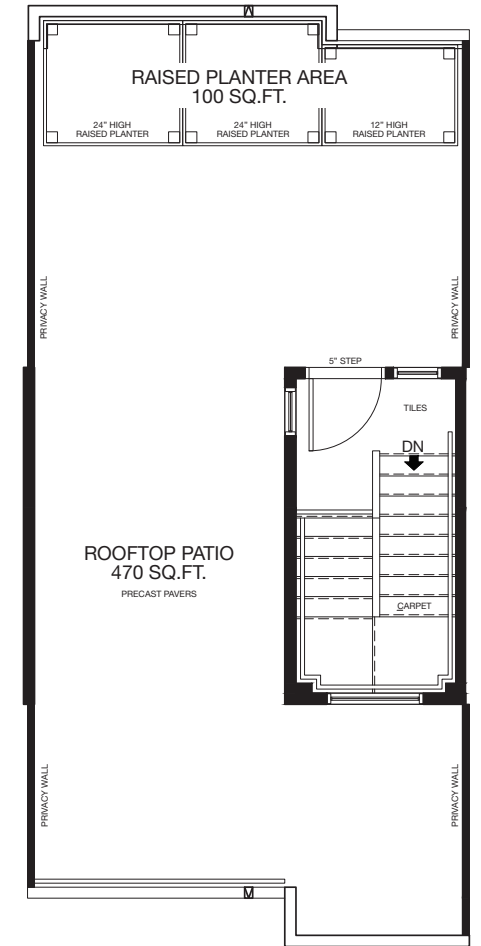
ENTRY LEVEL
Area: 249 Sq.Ft.



MAIN FLOOR
Area: 648 Sq.Ft.



UPPER FLOOR
Area: 676 Sq.Ft.



ROOFTOP PATIO
Area: 37 Sq.Ft.
Total Amenity Area: 570 Sq.Ft.

* Floorplan is an artist rendering only and may be subject to change without notice. Builder reserves the right to make modifications and changes to building design, specifications, features and floorplans without notice. Measurements and areas shown are based on pre-construction estimates and are approximate only. E.&O.E. Windows locations and sizes on these renderings are dependant on building location and elevation as approved by the City of Calgary, confirm with your sales representative exact locations. BROOK-25116 Floorplan Insert Sheets v7, July 5, 2021.

BROOKLYN

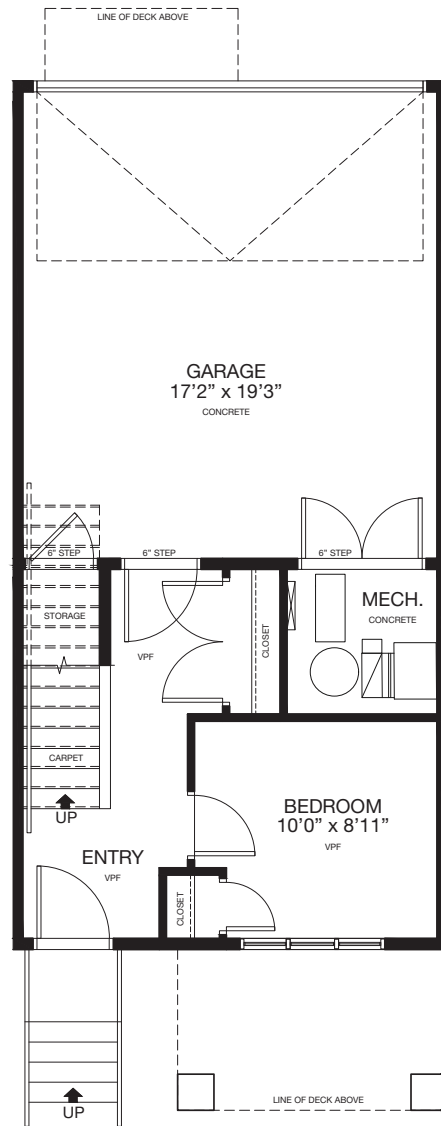
Townhomes



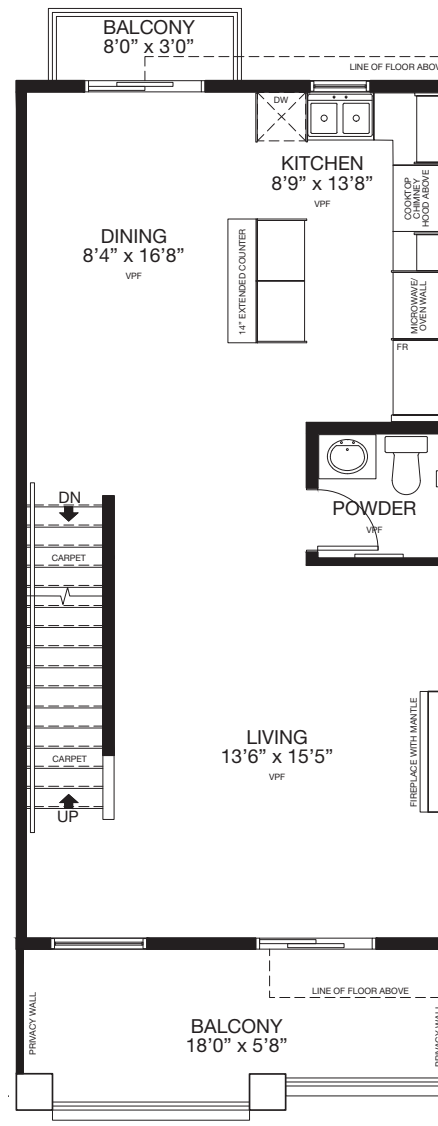
UNIT B

Int. Unit • 1610 Sq.Ft.

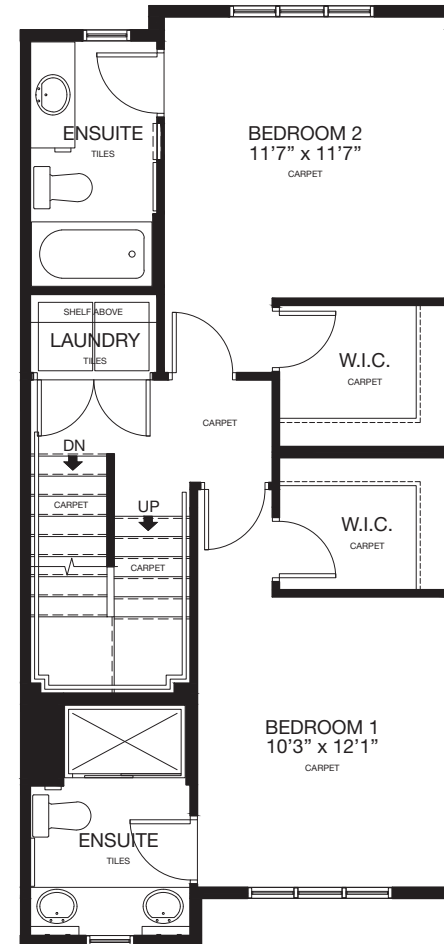
#14, 1710 - 28 Ave SW



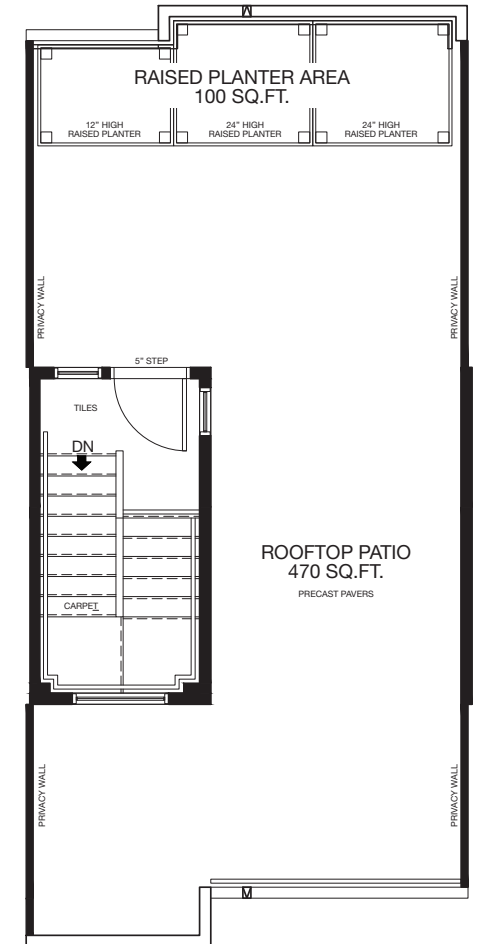
ENTRY LEVEL
Area: 249 Sq.Ft.



MAIN FLOOR
Area: 648 Sq.Ft.



UPPER FLOOR
Area: 676 Sq.Ft.



ROOFTOP PATIO
Area: 37 Sq.Ft.
Total Amenity Area: 570 Sq.Ft.

* Floorplan is an artist rendering only and may be subject to change without notice. Builder reserves the right to make modifications and changes to building design, specifications, features and floorplans without notice. Measurements and areas shown are based on pre-construction estimates and are approximate only. E.&O.E. Windows locations and sizes on these renderings are dependant on building location and elevation as approved by the City of Calgary, confirm with your sales representative exact locations. BROOK-25116 Floorplan Insert Sheets v7, July 5, 2021.

BROOKLYN

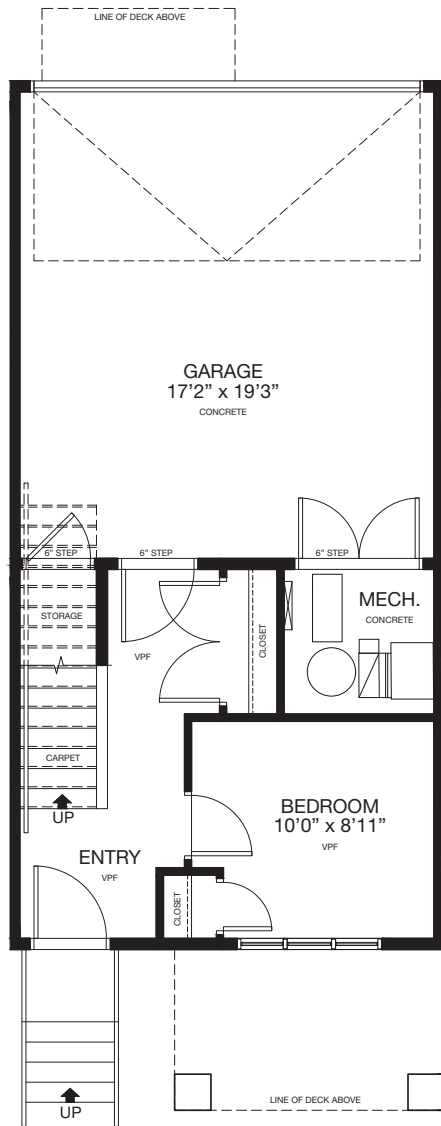
Townhomes



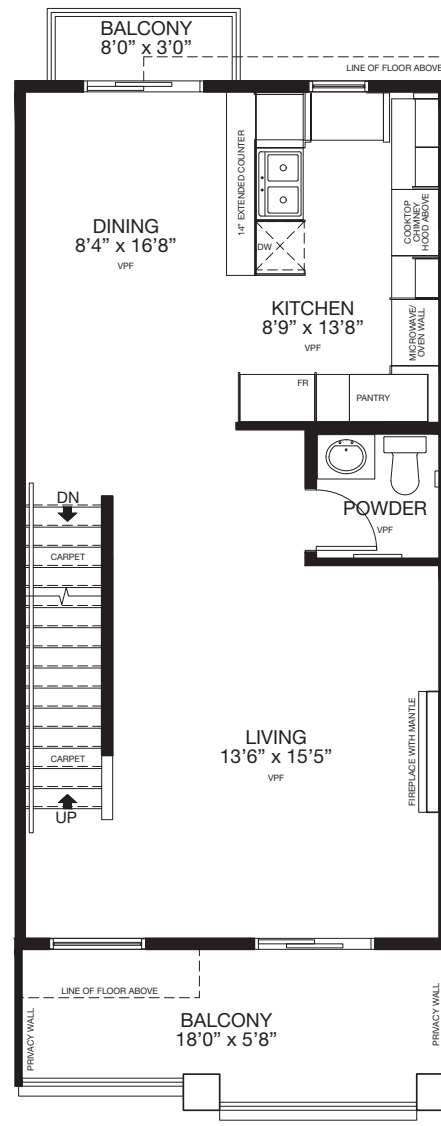
UNIT B

Int. Unit • 1610 Sq.Ft.

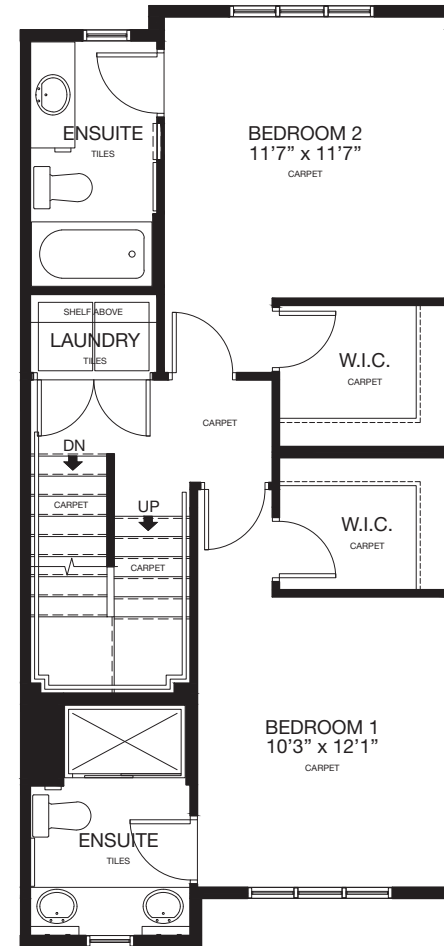
#15, 1710 - 28 Ave SW



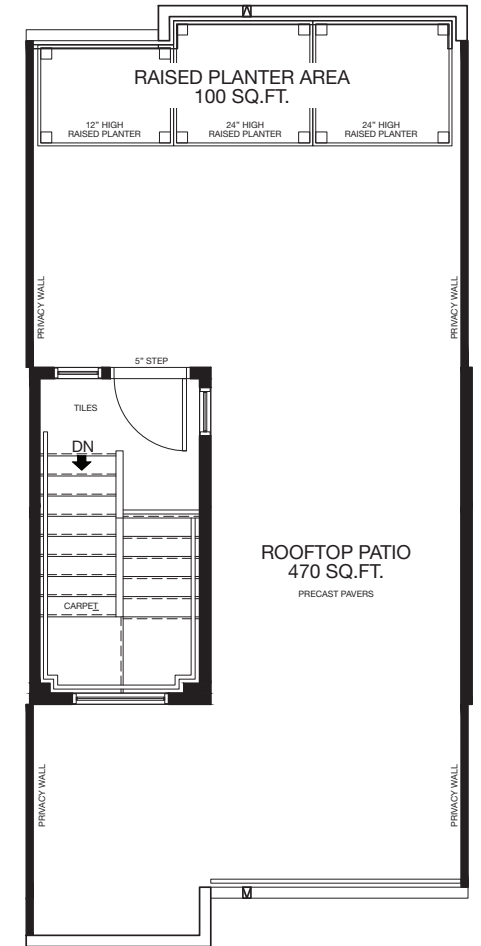
ENTRY LEVEL
Area: 249 Sq.Ft.



MAIN FLOOR
Area: 648 Sq.Ft.



UPPER FLOOR
Area: 676 Sq.Ft.



ROOFTOP PATIO
Area: 37 Sq.Ft.
Total Amenity Area: 570 Sq.Ft.

* Floorplan is an artist rendering only and may be subject to change without notice. Builder reserves the right to make modifications and changes to building design, specifications, features and floorplans without notice. Measurements and areas shown are based on pre-construction estimates and are approximate only. E.&O.E. Windows locations and sizes on these renderings are dependant on building location and elevation as approved by the City of Calgary, confirm with your sales representative exact locations. BROOK-25116 Floorplan Insert Sheets v7, July 5, 2021.

BROOKLYN

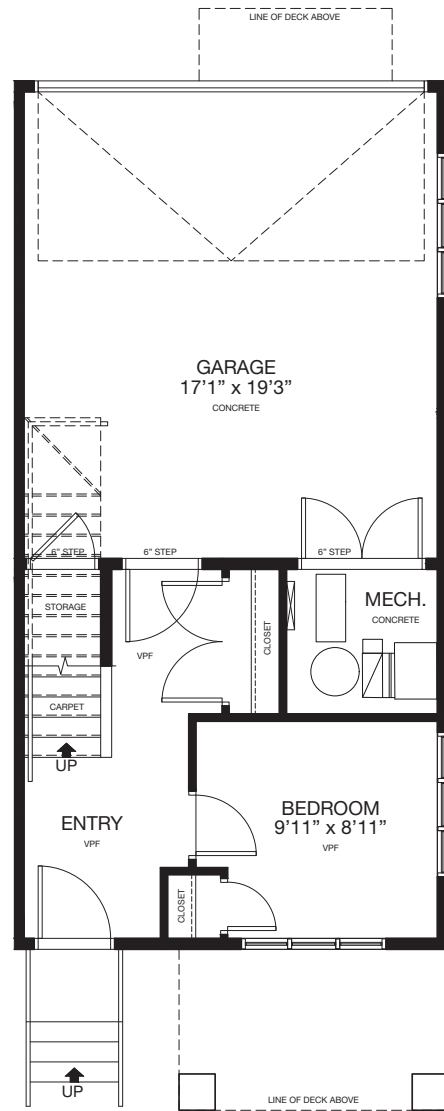
Townhomes



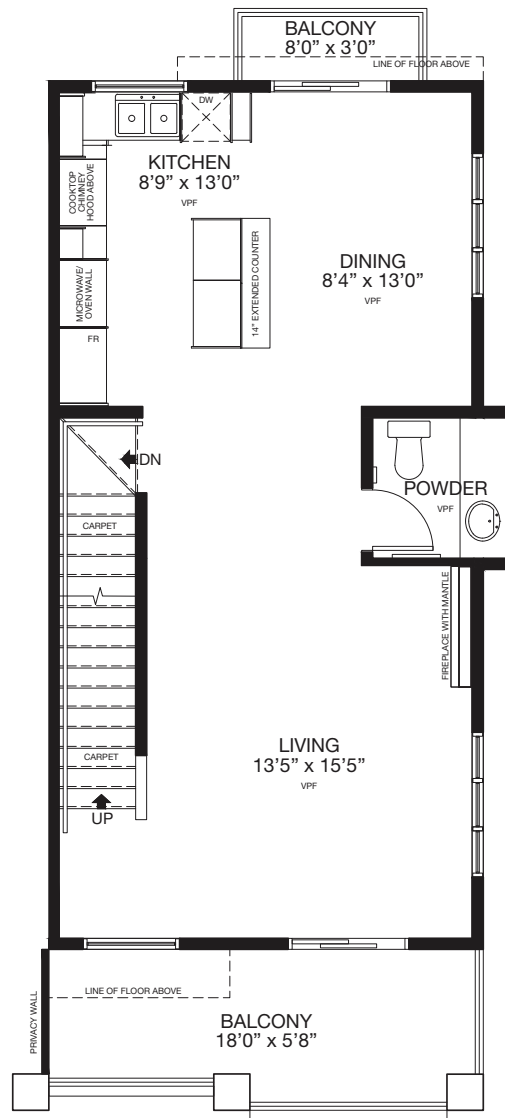
UNIT C

Int. Unit • 1619 Sq.Ft.

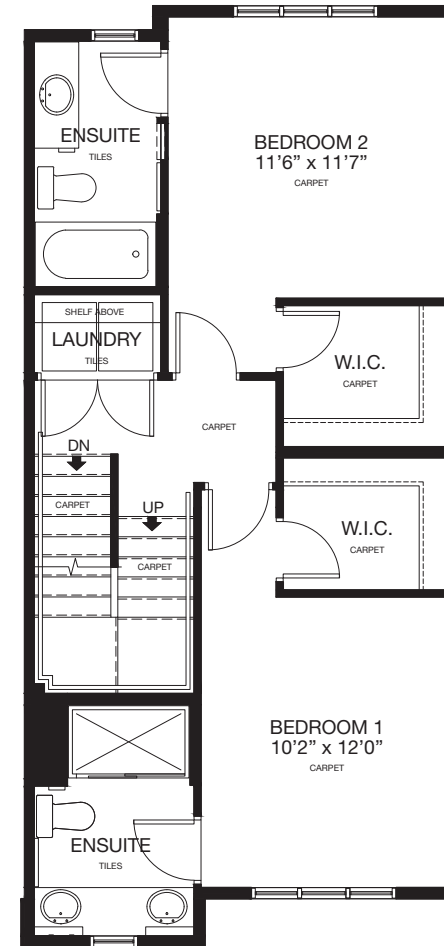
#16, 1710 - 28 Ave SW



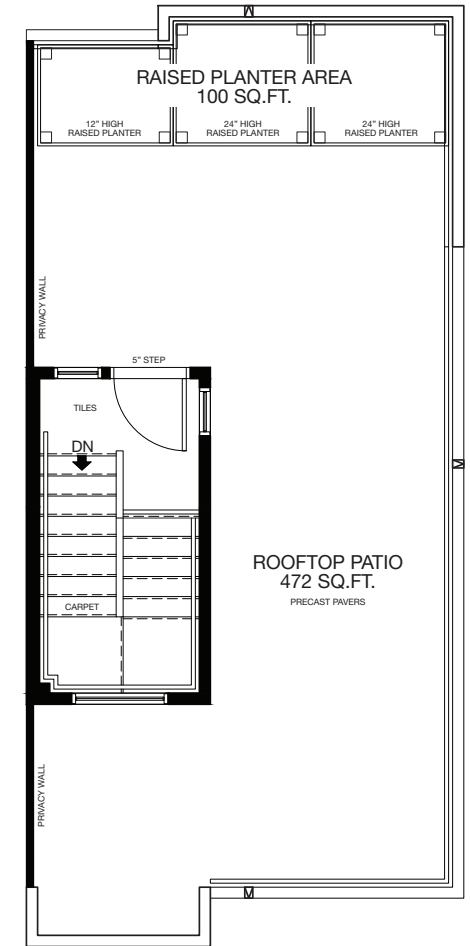
ENTRY LEVEL
Area: 248 Sq.Ft.



MAIN FLOOR
Area: 658 Sq.Ft.



UPPER FLOOR
Area: 676 Sq.Ft.



ROOFTOP PATIO
Area: 37 Sq.Ft.
Total Amenity Area: 572 Sq.Ft.

* Floorplan is an artist rendering only and may be subject to change without notice. Builder reserves the right to make modifications and changes to building design, specifications, features and floorplans without notice. Measurements and areas shown are based on pre-construction estimates and are approximate only. E.&O.E. Windows locations and sizes on these renderings are dependant on building location and elevation as approved by the City of Calgary, confirm with your sales representative exact locations. BROOK-25116 Floorplan Insert Sheets v7, July 5, 2021.